

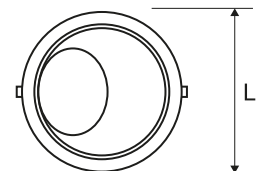
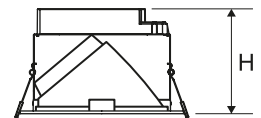
Decorative downlight luminaire for suspended ceilings, degree of water and dust-proof IP20 and IP44/20, with asymmetric reflector for LED light sources.

TECHNICAL DATA	Mounting: in the ceiling, with mounting brackets (included) Body: aluminum Colour: white Diffuser: opal
ELECTRICAL DATA	Power supply efficiency: 92% Power: 220-240V 50/60Hz Includes light source: yes Type of equipment: ED Electrical connection: max 3x2,5 mm ² wire
OPTICAL DATA	Light distribution: asymmetric Way of lighting: direct Reflector: polished
GENERAL DATA	Lifetime (L70B50): 50 000 h Operating temperature range: 0°C ... +35°C Warranty: 3 years Application: shopping centers, delicatessen, exhibitions, boutiques, galleries, jeweler, halls, hotels, museums, supermarkets



Code	Replacement of conventional technology [W]	Power LED [W]	Luminaire power [W]	Lumen LED [lm]	Lumen luminaire [lm]	Efficacy [lm/W]	Colour temperature [K]	CRI/Ra
Degree of water and dust protection: IP20								
300031.00073	2x18W (48W)	16	18	2300	1800	100	3000	≥80
300031.00074	2x18W (48W)	16	18	2300	1800	100	4000	≥80
300031.00075	2x26W (64W)	22	24	3000	2400	100	3000	≥80
300031.00076	2x26W (64W)	22	24	3000	2400	100	4000	≥80
Degree of water and dust protection: IP20/44								
300031.00077	2x18W (48W)	16	18	2300	1800	100	3000	≥80
300031.00078	2x18W (48W)	16	18	2300	1800	100	4000	≥80
300031.00079	2x26W (64W)	22	24	3000	2400	100	3000	≥80
300031.00080	2x26W (64W)	22	24	3000	2400	100	4000	≥80

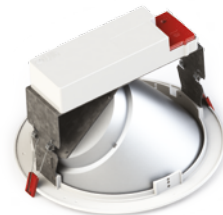
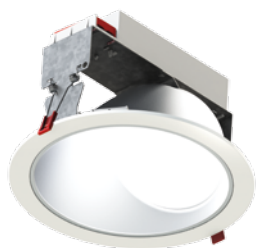
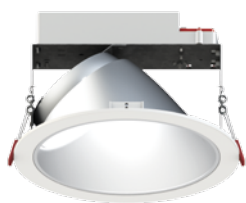
Code	Dimensions [mm] L H	Mounting dimensions [mm] ØS	Pallet quantity	Quantity in package	Net weight [kg]
Degree of water and dust protection: IP20					
300031.00073	240 160	215	132	1	0.7
300031.00074	240 160	215	132	1	0.7
300031.00075	240 160	215	132	1	0.7
300031.00076	240 160	215	132	1	0.7
Degree of water and dust protection: IP20/44					
300031.00077	240 160	215	132	1	0.7
300031.00078	240 160	215	132	1	0.7
300031.00079	240 160	215	132	1	0.7
300031.00080	240 160	215	132	1	0.7



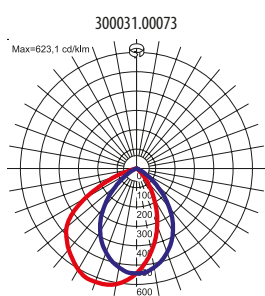
Luminous flux tolerance +/- 10%.

Lighting beam, light intensity distribution and light efficiency were examined in accordance with the EN ISO 17025:2005 norm for EN13032 norm series and the LM-79 norm.
Up-to-date product info available on our website www.lugbox24.com

OTHER PICTURES



LIGHT BEAM CURVES



Luminous flux tolerance +/- 10%.

Lighting beam, light intensity distribution and light efficiency were examined in accordance with the EN ISO 17025:2005 norm for EN13032 norm series and the LM-79 norm.

Up-to-date product info available on our website www.lugbox24.com