



TubePoint GEN2 - Luminaire range for traffic tunnels

TubePoint gen2

Many tunnel authorities have an outdated tunnel lighting installation that urgently needs to be replaced, but have only limited budget available. We are able to fulfill their requirements. TubePoint GEN2 is the result of years of experience in tunnel lighting combined with the latest technologies developed by Philips. With its modular design and modern LED architecture, TubePoint GEN2 is a versatile, cost-effective luminaire that meets the most stringent tunnel lighting requirements. It is made of highest-quality components that are dedicated for tunnels, thus ensuring a long lifetime, good performance and low maintenance costs. The efficiency and wide choice of optics means the number of luminaires can be reduced significantly compared with a conventional solution. And a high lumen per watt ratio at system level improves the total cost of ownership. TubePoint GEN2 is part of Philips' TotalTunnel solution for a complete tunnel lighting.

Benefits

- Flexible mounting solution, quick release for easy maintenance
- Easy connect, wide range of connectivity options
- Excellent quality optics, longer distance between luminaires
- Fast payback
- Equipped with Service tag, a QR-based identification system that makes each luminaire uniquely identifiable and provides maintenance, installation and spare part information

TubePoint gen2

Features

- Direct replacement of existing conventional luminaires (Lumen packages exceeding SON-T 400 W)
- Flexibility in application thanks to a range of lumen outputs and tunnel optics
- Compatible with Philips' tunnel controls and options for third-party controls
- Option of remote driver for quick and easy maintenance
- Wide choice of mounting systems

Application

- Traffic tunnels and underpasses

Versions



TubePoint GEN2 Small



TubePoint GEN2 Medium

Product details



TubePoint_GEN2-BGP235_MB-DPP.TIF

TubePoint_GEN2-BGP235-1DPP.TIF



TubePoint_GEN2-BGP235_MBQ-S-2DPP.TIF

TubePoint_GEN2-BGP235_MBQ_M-DPP.TIF



TubePoint gen2

Product details



TubePoint_GEN2-
BGP235_BA_SO-8DPP.TIF



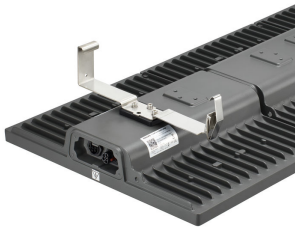
TubePoint_GEN2-
BGP235_MBQ_S-DPP.TIF



TubePoint_GEN2-
BGP235-2DPP.TIF



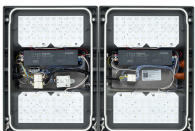
TubePoint_GEN2-BGP235_BA-
DPP.TIF



TubePoint_GEN2-
BGP235_MBQ_L-DPP.TIF



TubePoint_GEN2-BGP235_MBA-
DPP.TIF



TubePoint_GEN2-
BGP236-1DPP.TIF



TubePoint_GEN2-
BGP236-2DPP.TIF

TubePoint gen2

Application Conditions	
Maximum dim level	10%
Approval and Application	
Mech. impact protection code	IK09
Surge Protection (Common/Differential)	Luminaire surge protection level until 6 kV differential mode and 6 kV common mode
Controls and Dimming	
Dimmable	Yes
General Information	
Luminaire light beam spread	101° x 158°
CE mark	CE mark
Light source color	740 neutral white
Optical cover/lens type	Flat glass
Driver included	Yes
Flammability mark	For mounting on normally flammable surfaces
Light source replaceable	Yes
Optic type	Distribution symmetrical medium 11
Service tag	Yes
Initial Performance (IEC Compliant)	
Init. Corr. Color Temperature	4000 K
Init. Color Rendering Index	>70
Light Technical	
Standard tilt angle side entry	0°
Standard tilt angle posttop	-
Upward light output ratio	0
Mechanical and Housing	
Color	Dark gray

-

Order Code	Full Product Name	Driver failure rate at 5000 h
912300024108	BGP235 LED30-4S/740 DSM11 D9 MIO-CIO MBQ	0.53 %
912300024109	BGP235 LED50-4S/740 DSM11 D9 MIO-CIO MBQ	0.5 %
912300024110	BGP235 LED90-4S/740 DSM11 D9 MIO-CIO MBQ	0.5 %
912300024111	BGP235 LED120-4S/740 DSM11 D9 MIO-CIO MB	0.5 %
912300024112	BGP235 LED180-4S/740 DSM11 D9 MIO-CIO MB	0.5 %
912300024114	BGP236 LED360-4S/740 DSM11 D9 MIO-CIO MB	0.5 %

General Information

Order Code	Full Product Name	Lamp family code	Number of gear units	Number of light sources	Product Family Code	Order Code	Full Product Name	Lamp family code	Number of gear units	Number of light sources	Product Family Code
912300024108	BGP235 LED30-4S/740 DSM11 D9 MIO-CIO MBQ	LED30	1 unit	20 pcs	BGP235	912300024109	BGP235 LED50-4S/740 DSM11 D9 MIO-CIO MBQ	LED50	1 unit	20 pcs	BGP235

TubePoint gen2

Order Code	Full Product Name	Lamp family code	Number of gear units	Number of light sources	Product Family Code
912300024110	BGP235 LED90-4S/740 DSM11 D9 MIO-CIO MBQ	LED90	1 unit	28 pcs	BGP235
912300024111	BGP235 LED120-4S/740 DSM11 D9 MIO-CIO MB	LED120	1 unit	40 pcs	BGP235

Order Code	Full Product Name	Lamp family code	Number of gear units	Number of light sources	Product Family Code
912300024112	BGP235 LED180-4S/740 DSM11 D9 MIO-CIO MB	LED180	1 unit	56 pcs	BGP235
912300024114	BGP236 LED360-4S/740 DSM11 D9 MIO-CIO MB	LED360	2 units	112 pcs	BGP236

Initial Performance (IEC Compliant)

Order Code	Full Product Name	Initial luminous flux
912300024108	BGP235 LED30-4S/740 DSM11 D9 MIO-CIO MBQ	2520 lm
912300024109	BGP235 LED50-4S/740 DSM11 D9 MIO-CIO MBQ	4200 lm
912300024110	BGP235 LED90-4S/740 DSM11 D9 MIO-CIO MBQ	7470 lm

Order Code	Full Product Name	Initial luminous flux
912300024111	BGP235 LED120-4S/740 DSM11 D9 MIO-CIO MB	9840 lm
912300024112	BGP235 LED180-4S/740 DSM11 D9 MIO-CIO MB	14940 lm
912300024114	BGP236 LED360-4S/740 DSM11 D9 MIO-CIO MB	29880 lm

