



PHILIPS

dynalite 

Networked Solutions

# Philips Dynalite Product Portfolio



# Philips Dynalite – the intelligent choice

**When you choose Philips Dynalite, you are selecting the world's finest lighting control system. Tried and tested in more than 30,000 projects, Philips Dynalite has implemented some of the largest and most extensive control networks around the globe. The same robust technology can be used in any application, on any scale.**

Philips Dynalite is part of the Signify Professional Systems group. This global group includes several other worldwide leaders in LED lighting and advanced lighting controls – including Philips Color Kinetics, Philips CityTouch, and Philips Large Luminous Surfaces.

Combined, these groups offer years of market knowledge and experience in developing best-in-class lighting solutions and controls. Signify builds on our extraordinary strengths and depth of expertise to bring the best-in-the-industry connected lighting systems to our valued customers and partners.

Our experience and expertise are unrivaled and our reputation is based on delivering successful outcomes for difficult and challenging projects. So, it is not really a matter of “Why use Philips Dynalite?” but “Why use anything else?”

This Product Portfolio aims to provide a general overview of the Philips Dynalite range of Indoor Networked Controls products and solutions. Further detailed information can be found on each product in their specific Technical Datasheet, available for download at: [www.philips.com/dynalite](http://www.philips.com/dynalite)

**PHILIPS**

dynalite 

# Contents

## User Interfaces

PAXBPA	AntumbraButton American	7
PAXBPE	AntumbraButton European	7
PADPA	AntumbraDisplay American	8
PADPE	AntumbraDisplay European	8
PATPA	AntumbraTouch American	9
PATPE	AntumbraTouch European	9
DACM-DyNet	Antumbra Communication Module	10
PAXBLE	AntumbraLite European	10
DR2PA	Revolution Series American	11
DR2PE	Revolution Series European	11
DPNA-SF	Classic Series American	12
DPNE-SF	Classic Series European	12
DL2PA	Standard Series American	13
DLPE	Standard Series European	13
PDTS	Networked Touchscreen	14

## Sensors

DUS360CR	Multifunction Sensor	16
DUS360CR-DA	Multifunction Sensor	16
DUS360CR-D	Multifunction Sensor	17
DUS360CS	Multifunction Sensor	17
DUS360CS-D	Multifunction Sensor	18
DUS804CS-UP	Multifunction Sensor	18
DUS90CS	Multifunction Sensor	19
DUS30CS	Multifunction Sensor	19
DUS90AHB-D	Multifunction Sensor	20
DUS90WHB-D	Multifunction Sensor	20
DUS30LHB-D	Multifunction Sensor	21

## Relay Controllers

DDRC-GRMS-E	Multi-Protocol Switching Room Controller	23
DDRC420FR	Relay Controller	23
DDRC810DT-GL	Relay Controller	24
DDRC1220FR-GL	Relay Controller	24
DMRC210	Relay Controller	25

## Power Dimmers

DDLE801	Leading Edge Dimmer Controller	27
DDLE802	Leading Edge Dimmer Controller	27
DLE410	Leading Edge Dimmer Controller	28
DLE1205	Leading Edge Dimmer Controller	28
DLE1210GL	Leading Edge Dimmer Controller	29
DLE220	Leading Edge Dimmer Controller	29
DLE1220GL	Leading Edge Dimmer Controller	30
DTE1210	Trailing Edge Dimmer Controller	30
DDLEDC605GL	PWM Controller	31

## Signal Dimmers

DDBC120-DALI	Single-master DALI Driver Controller	33
DDBC300-D	DALI Driver Controller	33
DDBC320-D	DALI Driver Controller	34
DDBC516FR	Signal Dimmer Controller	34
DDBC1200	Signal Dimmer Controller	35
DBC1210	Signal Dimmer Controller	35
DBC1220GL	Signal Dimmer Controller	36
DBC905	Signal Dimmer Controller	36
DMBC110	Signal Dimmer Controller	37

## Multipurpose Controllers

DDMC802	Multipurpose Modular Controller	39
DMC810GL	Multipurpose Controller	39
DMC2	Multipurpose Modular Controller	40
DMC4	Multipurpose Modular Controller	40
Control Modules	DMC Multipurpose Controllers	41

## Integration Devices

DDNG232	RS-232 Network Gateway	43
DDNG-BACnet	BACnet Network Gateway	43
DDNG-KNX	KNX Network Gateway	44
DLLI8180	Dry Contact Interface	44
DPMI940-D	Dry Contact Interface	45
DDMIDC8	Low Level Input Integrator	45
DDFCUC010	Fan Coil Unit Controller	46
DDFCUC024	Fan Coil Unit Controller	46

## Wireless Devices

PDZG-E	ZigBee Gateway	48
SNS401CMP	Wireless Group Controller	48

## Network Devices

PDDEG-S	Ethernet Gateway - Supervisor	50
PDEG	Ethernet Gateway	50
PDEB	Ethernet Bridge	51
DDNG485	RS-485/DMX512 Gateway	51
DDNI485	Passive Gateway	52
DDTC001	Timeclock	52
DTK622-USB	PC Node	53
DTK622-232	Serial Port Node	53

## Electrical Accessories

PAEFE	Antumbra Electrical Frames	55
DDNP1501	Network Power Supply	55
DDPB22-RJ12	Network Junction Box	56
DMAL120F	Active Load	56
DyNet-STP-CABLE-LSZH	Cat5 Cable	57
DyNet-SFLAT6-CABLE	Flat Cable	57
DH2X24	DIN Rail Enclosure	58

## Wired Systems

PDUVCC	UV-C control system	60
--------	---------------------	----

## Software and Apps

Philips Dynalite System Manager	62
Philips Dynalite System Builder	62
Philips Dynalite Control App	63
Philips Dynalite EnvisionTouch	63
Philips Dynalite DynamicTouch	64

## Further Reading



Royal Adelaide Hospital  
Adelaide, Australia



# User Interfaces



Tencent Building Shenzhen  
Shenzhen, China

# PAxBPA AntumbraButton American

## Contemporary two, four, or six-button panel with light-wash effect

The Philips AntumbraButton user interface features a sleek, contemporary design and incorporates the latest in field effect technology. Each easy-to-press mechanical button can be customized with text or icons and programmed to perform a wide variety of local and site-wide control functions. The PA2BPA, PA4BPA, and PA6BPA range is suitable for, but not limited to North American, South American, Australian and New Zealand markets.

**Field effect technology** – The user interface detects an approaching user and ‘wakes up’, initiating a wall-wash lighting effect to encourage interaction.

**Supplied as two components** – The Application Module contains buttons, rim, base and mounting plate, which can be mixed and matched to suit décor. The Communication Module contains logical and network functions and can be pre-programmed off-site, allowing commissioning to commence prior to finalizing rim and button options.

**Hidden sensory inputs** – An internal light sensor measures ambient light and adjusts lightwash effect accordingly.

A built-in temperature sensor automatically adjusts air conditioning when integrated into the system.

**Multiple language and icon labeling** – Button labeling language choices include English, Chinese and Arabic. A library of common icons transcends language barriers, which is particularly useful in hospitality applications.

**Décor-matching options** – Rims are available in aluminum, chrome, magnesium and white. Corona polycarbonate button finishes include Magnesium, Silver and White. Flare metallic button finishes include Aluminum, Gold, Jet, Noir, Prestige and Vintage.



**Dimensions:**  
116 x 75 x 36 mm (4.57 x 2.95 x 1.42 in)

**Ordering Code:**  
Please use the online Antumbra configurator at [www.philips.com/antumbra](http://www.philips.com/antumbra) for ordering codes.

# PAxBPE AntumbraButton European

## Contemporary two, four, or six-button panel with light-wash effect

The Philips AntumbraButton user interface features a sleek, contemporary design and incorporates the latest in field effect technology. Each easy-to-press mechanical button can be customized with text or icons and programmed to perform a wide variety of local and site-wide control functions. The PA2BPE, PA4BPE, and PA6BPE range is suitable for, but not limited to, European, Middle Eastern, African and Asian markets.

**Field effect technology** – The user interface detects an approaching user and ‘wakes up’, initiating a wall-wash lighting effect to encourage interaction.

**Supplied as two components** – The Application Module contains buttons, rim, base and mounting plate, which can be mixed and matched to suit décor. The Communication Module contains logical and network functions and can be pre-programmed off-site, allowing commissioning to commence prior to finalizing rim and button options.

**Hidden sensory inputs** – An internal light sensor measures ambient light and adjusts lightwash effect accordingly.

A built-in temperature sensor automatically adjusts air conditioning when integrated into the system.

**Multiple language and icon labeling** – Button labeling language choices include English, Chinese and Arabic. A library of common icons transcends language barriers, which is particularly useful in hospitality applications.

**Décor-matching options** – Rims are available in aluminum, chrome, magnesium and white. Corona polycarbonate button finishes include Magnesium, Silver and White. Flare metallic button finishes include Aluminum, Gold, Jet, Noir, Prestige and Vintage.



**Dimensions:**  
88 x 88 x 23 mm (3.46 x 3.46 x 0.90 in)

**Ordering Code:**  
Please use the online Antumbra configurator at [www.philips.com/antumbra](http://www.philips.com/antumbra) for ordering codes.

## PADPA AntumbraDisplay American

### Contemporary button panel with LCD display

The Philips AntumbraDisplay user interface provides a central LCD display to present multiple pages of functions and system information. It incorporates the latest in field effect technology. The contemporary design features a number of button configurations, with each button capable of local or site-wide control functions. The PADPA range is suitable for, but not limited to, North American, South American, Australian and New Zealand markets.

**Field effect technology** – The user interface detects an approaching user and ‘wakes up’, initiating a wall-wash lighting effect to encourage interaction.

**Supplied as two components** – The Application Module contains buttons, rim, base and mounting plate, which can be mixed and matched to suit décor. The Communication Module contains all of the logical and network functions and is pre-programmed off-site, allowing commissioning to commence prior to finish options being finalized.

**Hidden sensory inputs** – An internal light sensor measures ambient light and adjusts lightwash effect accordingly. A built-in temperature sensor automatically adjusts air conditioning when integrated into the system.

**Multiple language and icon labeling** – Display labeling language choices include English, Chinese and Arabic. A library of common icons transcends language barriers, which is particularly useful in hospitality applications.

**Central LCD** – Allows for display of system information including temperature, time, channel level and current scene. Button function can change when navigating between up to 16 pages.

**Décor-matching options** – Rims are available in aluminum, chrome, magnesium and white. Corona polycarbonate button finishes include Magnesium, Silver and White. Flare metallic button finishes include Aluminum, Gold, Jet, Noir, Prestige and Vintage.



**Dimensions:**  
116 x 75 x 36 mm (4.57 x 2.95 x 1.42 in)

**Ordering Code:**  
Please use the online Antumbra configurator at [www.philips.com/antumbra](http://www.philips.com/antumbra) for ordering codes.

## PADPE AntumbraDisplay European

### Contemporary button panel with LCD display

The Philips AntumbraDisplay user interface provides a central LCD display to present multiple pages of functions and system information. It incorporates the latest in field effect technology. The contemporary design features a number of button configurations, with each button capable of local or site-wide control functions. The PADPE range is suitable for, but not limited to, European, Middle Eastern, African and Asian markets.

**Field effect technology** – The user interface detects an approaching user and ‘wakes up’, initiating a wall-wash lighting effect to encourage interaction.

**Supplied as two components** – The Application Module contains buttons, rim, base and mounting plate, which can be mixed and matched to suit décor. The Communication Module contains all of the logical and network functions and is pre-programmed off-site, allowing commissioning to commence prior to finish options being finalized.

**Hidden sensory inputs** – An internal light sensor measures ambient light and adjusts lightwash effect accordingly. A built-in temperature sensor automatically adjusts air conditioning when integrated into the system.

**Multiple language and icon labeling** – Display labeling language choices include English, Chinese and Arabic. A library of common icons transcends language barriers, which is particularly useful in hospitality applications.

**Central LCD** – Allows for system information to be shown such as temperature, time, channel level and current scene. Button function can change when navigating between the up to 16 pages.

**Décor-matching options** – Rims are available in aluminum, chrome, magnesium and white. Corona polycarbonate button finishes include Magnesium, Silver and White. Flare metallic button finishes include Aluminum, Gold, Jet, Noir, Prestige and Vintage.



**Dimensions:**  
88 x 88 x 36 mm (3.46 x 3.46 x 1.42 in)

**Ordering Code:**  
Please use the online Antumbra configurator at [www.philips.com/antumbra](http://www.philips.com/antumbra) for ordering codes.



# PATPA AntumbraTouch American

## Contemporary smooth glass panels with capacitive touch technology

The Philips AntumbraTouch user interface has a smooth glass finish with capacitive touch technology to detect button presses. It also incorporates the latest in field effect technology to sense a person's presence. The contemporary design features a number of button configurations, with each button capable of local or site-wide control functions. The PATPA range is suitable for, but not limited to, North American, South American, Australian and New Zealand markets.

**Field effect technology** – The user interface detects an approaching user and 'wakes up', initiating a wall-wash lighting effect to encourage interaction.

**Capacitive touch technology** – Smooth glass finish detects the presence of a finger and triggers a button press action.

**Supplied as two components** – The Application Module contains buttons, rim, base and mounting plate, which can be mixed and matched to suit décor. The Communication Module contains all of the logical and network functions and is pre-programmed off-site, allowing commissioning to commence prior to finish options being finalized.

**Hidden sensory inputs** – An internal light sensor measures ambient light and adjusts lightwash effect accordingly. A built-in temperature sensor automatically adjusts air conditioning when integrated into the system.

**Multiple language and icon labeling** – Button labeling language choices include English, Chinese and Arabic. A library of common icons transcends language barriers, which is particularly useful in hospitality applications.

**Décor-matching options** – Rims are available in Aluminum, Black, Chrome and White. Fascia finishes include Black, Silver and White.



**Dimensions:**  
116 x 75 x 22 mm (4.57 x 2.95 x 0.87 in)

**Ordering Code:**  
Please use the online Antumbra configurator at [www.philips.com/antumbra](http://www.philips.com/antumbra) for ordering codes.

# PATPE AntumbraTouch European

## Contemporary smooth glass panels with capacitive touch technology

The Philips AntumbraTouch user interface has a smooth glass finish with capacitive touch technology to detect button presses. It also incorporates the latest in field effect technology to sense a person's presence. The contemporary design features a number of button configurations, with each button capable of local or site-wide control functions. The PATPE range is suitable for, but not limited to, European, Middle Eastern, African and Asian markets.

**Field effect technology** – The user interface detects an approaching user and 'wakes up', initiating a wall-wash lighting effect to encourage interaction.

**Capacitive touch technology** – Smooth glass finish detects the presence of a finger and triggers a button press action.

**Supplied as two components** – The Application Module contains buttons, rim, base and mounting plate, which can be mixed and matched to suit décor. The Communication Module contains all of the logical and network functions and is pre-programmed off-site, allowing commissioning to commence prior to finish options being finalized.

**Hidden sensory inputs** – An internal light sensor measures ambient light and adjusts lightwash effect accordingly. A built-in temperature sensor automatically adjusts air conditioning when integrated into the system.

**Multiple language and icon labeling** – Button labeling language choices include English, Chinese and Arabic. A library of common icons transcends language barriers, which is particularly useful in hospitality applications.

**Décor-matching options** – Rims are available in Aluminum, Black, Chrome and White. Fascia finishes include Black, Silver and White.



**Dimensions:**  
88 x 88 x 22 mm (3.46 x 3.46 x 0.87 in)

**Ordering Code:**  
Please use the online Antumbra configurator at [www.philips.com/antumbra](http://www.philips.com/antumbra) for ordering codes.

# DACM-DyNet Antumbra Communication Module

## DyNet network interface for Antumbra user interfaces

The DACM-DyNet is a DyNet communication module that connects any Antumbra user interface to a Philips Dynalite system.

**Powered by DyNet** – Does not require an external power supply.

**64-channel DMX Tx support** – Can be factory-set to DMX instead of DyNet, to communicate directly with DMX fixtures.

**Onboard processor** – Contains all logical and network functions and can be commissioned prior to installation.

**Functions without application module** – Can be installed, wired and tested without application module, avoiding fascia damage during ongoing construction.

**Pre-configuration** – Can store and recall up to 21 configurations using the DIP switch, streamlining the commissioning and installation process.

**Dimensions:**  
45 x 43 x 25 mm (1.77 x 1.70 x 0.98 in)

**Ordering Code:**  
12NC – 913703970707



# PAXBLE AntumbraLite European

## Two, four, or six-button panel with dry contact switches

The AntumbraLite is a cost-effective user interface with a sleek, contemporary design, intended for use with any Dynalite load controller featuring dry contact inputs. Available in the full range of Antumbra button and rim finishes, AntumbraLite also supports customized button labelling with text or icons to suit any application.

**Multiple language and icon labeling** – Button labeling language choices include English, Chinese and Arabic. A library of common icons transcends language barriers, which is particularly useful in hospitality applications.

**Décor-matching options** – Buttons and rims are available in a range of attractive polycarbonate and metallic finishes.

**Dimensions:**  
88 x 88 x 24.5 mm (3.46 x 3.46 x 0.96 in)

**Ordering Code:**  
Please use the online Antumbra configurator at [www.philips.com/antumbra](http://www.philips.com/antumbra) for ordering codes.





# DR2PA Revolution Series American

## Clip-on cover system provides the ultimate design flexibility

The Philips Dynalite Revolution series of user interfaces provides an elegant and sophisticated connection to the DyNet network. The devices can communicate directly with each other, with lighting load controllers and with other integration devices, offering a simple user interface capable of complex automation system functions. The DR2PA range is suitable for, but not limited to, North American, South American, Australian and New Zealand markets.

**Extensive designer range** – Innovative clip-on cover fastening system provides the ultimate flexibility in décor-matching. Standard finishes include brushed stainless steel and white or black glass.

**A choice of button colors** – To complement the cover color and finish choice, buttons are available in silver, white or charcoal gray.

**Custom engraving options** – Identification of button function is made simple through custom engraving. Buttons can be labeled to identify purpose or area, providing accurate explanation of function. Backlighting assists to locate the UI and provides ease of readability, even in a darkened environment.

**LED status indicators** – Easily discern which mode is in operation via the LED indicator on each button.

**Standard control options** – Each button can be programmed to perform a range of standard control options that are individually configured to perform functions including toggle lighting on/off and ramp lighting up/down.

**Complex functionality in a single action** – A single button press can be used to effect an entire system change, providing a true automation solution.

**Designed to meet any requirement**  
– Available in one to 24 button configurations, the Revolution series user



interfaces can be designed to perform as many or as few functions as required.

**Dimensions:**  
117 x 75 x 30 mm (4.61 x 2.95 x 1.18 in)

**Ordering Code:**  
Please contact your local Signify representative.

# DR2PE Revolution Series European

## Clip-on cover system provides the ultimate design flexibility

The Philips Dynalite Revolution series of user interfaces provides an elegant and sophisticated connection to the DyNet network. The devices can communicate directly with each other, with lighting load controllers and with other integration devices, offering a simple user interface capable of complex automation system functions. The DR2PE range is suitable for, but not limited to, European, Middle Eastern, African and Asian markets.

**Extensive designer range** – Innovative clip-on cover fastening system provides the ultimate flexibility in décor-matching. Standard finishes include brushed stainless steel and white or black glass.

**A choice of button colors** – To complement the cover color and finish choice, buttons are available in silver, white or charcoal gray.

**Custom engraving options** – Identification of button function is made simple through custom engraving. Buttons can be labeled to identify purpose or area, providing accurate explanation of function. Backlighting assists to locate the panel and provides

ease of readability, even in a darkened environment.

**LED status indicators** – Easily discern which mode is in operation via the LED indicator on each button.

**Standard control options** – Each button can be programmed to perform a range of standard control options that are individually configured to perform functions including toggle lighting on/off and ramp lighting up/down.

**Complex functionality in a single action**  
– A single button press can be used to effect an entire system change, providing a true automation solution.



**Designed to meet any requirement**  
– Available in one to 24 button configurations, the Revolution series user interfaces can be designed to perform as many or as few functions as required.

**Dimensions:**  
89 x 89 x 31 mm (3.50 x 3.50 x 1.22 in)

**Ordering Code:**  
Please contact your local Signify representative.

## DPNA-SF Classic Series American

### Brushed stainless steel panel with blue LED indicator

The Philips Dynalite Classic series user interfaces are a popular choice for commercial and residential applications, providing a robust automation solution. The DPNA-SF range features a screwless fascia and is suitable for, but not limited to, North American, South American, Australian and New Zealand markets.

**Screwless fixing fascia** – For use in applications where design aesthetic is a key consideration.

**Standard finish** – Supplied as standard in high quality brushed stainless steel.

**LED status indicators on each button** – Provides tactile and visual feedback on system operation.

**Removable button caps** – Allows engraving for easy identification of button function.

**Button color** – Supplied in silver as standard, with black bezel and black engraving.

**Available in 13 standard layouts** – Incorporates the most commonly used control scenarios.

**Custom features available** – Optional devices including key switches and engraving are available for unique control solutions.

**Dimensions:**  
115 x 72 x 34 mm (4.53 x 2.83 x 1.34 in)

**Ordering Code:**  
Please contact your local Signify representative.



## DPNE-SF Classic Series European

### Brushed stainless steel panel with blue LED indicator

The Philips Dynalite Classic series user interfaces are a popular choice for commercial and residential applications, providing a robust automation solution. The DPNE-SF range features a screwless fascia and is suitable for, but not limited to, European, Middle Eastern, African and Asian markets.

**Screwless fixing fascia** – For use in applications where design aesthetic is a key consideration.

**Standard finish** – Supplied as standard in high quality brushed stainless steel.

**LED status indicators on each button** – Provides tactile and visual feedback on system operation.

**Removable button caps** – Allows engraving for easy identification of button function.

**Button color** – Supplied in silver as standard, with black bezel and black engraving.

**Available in 13 standard layouts** – Incorporates the most commonly used control scenarios.

**Custom features available** – Optional devices including key switches and engraving are available for unique control solutions.

**Dimensions:**  
88 x 88 x 34 mm (3.46 x 3.46 x 1.34 in)

**Ordering Code:**  
Please contact your local Signify representative.





## DL2PA Standard Series American

### Slim-line panel in white with blue LED indicators

The Philips Dynalite Standard series has a minimalist design with full functionality. Built with the full Philips Dynalite feature set, these simple yet elegant interfaces bring the full power of the automation system to the touch of a button. The DL2PA range features a slimline finish and is suitable for, but not limited to, North American, South American, Australian and New Zealand markets.

**Slimline finish** – Ultra-thin profile provides a less intrusive alternative, where aesthetics are a key issue.

**Aesthetically pleasing** – Provides an elegant point for integrated automation in commercial buildings and homes.

**Available in two configurations** – Single column, for up to five buttons and a dual column design for up to ten buttons, where more complex control is required.

**Incorporates a miniature DyNet control network socket** – Discreetly located under the snap-on cover, the network socket enables system adjustments and programming from any user interface on the network.

**Smooth action buttons with blue LED indicators** – Provide tactile and visual feedback and are easily removed for engraving.

**Simple clean design** – Available with white fascia and white buttons.

**Dimensions:**  
116 x 74 x 35 mm (4.57 x 2.91 x 1.38 in)

**Ordering Code:**  
Please contact your local Signify representative.



## DLPE Standard Series European

### Brushed metal panel with LED indicators

The Philips Dynalite Standard series is beautifully formed and highly functional. Built with the full Philips Dynalite feature set, these simple yet elegant interfaces bring the full power of the automation system to the touch of a button. The DLPE range is suitable for, but not limited to, European, Middle Eastern, African and Asian markets.

**Aesthetically pleasing** – Provides an elegant point for integrated automation in commercial buildings and homes.

**Available in two configurations** – Single column, for up to five buttons and a dual column design for up to ten buttons, where more complex control is required.

**Incorporates a miniature DyNet control network socket** – Discreetly located under the snap-on cover, the network socket enables system adjustments and programming from any user interface on the network.

**Smooth action buttons with LED indicators** – Provide tactile and visual feedback and are easily removed for engraving.

**Simple clean design** – Available with silver fascia and charcoal buttons.

**Dimensions:**  
87 x 87 x 34 mm (3.42 x 3.42 x 1.34 in)

**Ordering Code:**  
Please contact your local Signify representative.



# PDTS Networked Touchscreen

## Advanced building automation and control at your fingertips

Designed as an integral part of the Dynalite system, the PDTS offers intelligent control and direct access to scheduling, scene editing, diagnostics, and local environmental sensing. Combining Ethernet connectivity, a powerful onboard processor, and contemporary design cues from the Antumbra user interface range, the PDTS is a sleek, functional complement to any project.

**178 mm capacitive touchscreen** – With high resolution, rich color and wide viewing angle.

**Proximity sensor** – Triggers soft halo light effect to welcome user interaction.

**Ethernet port** – Provides access for commissioning and file transfers.

**Internal astronomical timeclock** – Enables advanced scheduling of behavior, options, and automated tasks based on time of day or sunrise/sunset.

**Customizable graphical menus** – Seamless control of lighting, curtains/blinds, HVAC, A/V equipment and compatible third-party systems.

**Built-in environmental sensors** – Humidity and temperature can be

displayed on standby screen and communicated to third-party systems.

**Templated commissioning option** – Simply load the project XML file for fast configuration, or upload custom web pages from System Builder.

**Thin profile and easy mounting** – Fits industry-standard double wall boxes (EU or US).

**Secure access** – Employs HTTPS for secure, encrypted network communication, with support for onboard security certificates.

**User authentication** – Secure login feature available for CGI commands and user functions, with customizable access levels for each user.



**Dimensions:**  
124 x 184 x 40 mm (7.24 x 4.88 x 1.57 in)

**Ordering Code:**

PDTS	12NC – 913703334309
------	---------------------

**Accessories:**

DDNP1501 (12 VDC network power supply)	12NC – 913703090309
DMNP24040-P-NA (24 VDC network power supply)	12NC – 913703580309



# Sensors



## DUS360CR Multifunction Sensor

### Low profile recessed 360° ceiling sensor

The Philips Dynalite DUS360CR is a recess mountable 360 degree multifunction sensor that combines motion detection (PIR), infrared remote control reception (IR) and ambient light level detection (PE) into one device in applications such as offices, lecture theaters and homes.

**Motion detection feature** – Detects the presence or absence of motion and adjusts lights accordingly.

**Segmented click-up bezel** – Surrounds the motion sensor element and enables a portion of the sensing field to be masked. This prevents nuisance detection from adjacent doorways or corridors.

**Ambient light level regulation** – In applications where it is critical to maintain precise light levels, the PE function reads ambient levels and adjusts artificial light accordingly.

**Infrared receive capability** – Manually adjust light levels using a hand-held remote control, via the inbuilt IR receive sensor of the DUS360CR.

**Daylight harvesting mode** – Delivers automatic energy savings.

**Corridor hold** – Links corridor areas with adjacent rooms so corridor remains lit while occupancy is detected in adjacent rooms.

**Suitable for plenum use** – UL approved for installation in air-handling plenum spaces.

**Dimensions:**  
72 dia. x 41 mm (2.83 dia. x 1.61 in)

**Ordering Code:**  
12NC – 913703689609



## DUS360CR-DA Multifunction Sensor

### Low profile recessed 360° ceiling sensor

The Philips Dynalite DUS360CR-DA is a recess mountable 360 degree motion sensor that combines motion detection (PIR), infrared remote control reception (IR) and ambient light level detection (PE) into the one device. The Philips Dynalite DUS360CR-DA is a component of the EcoSet system and is a switch-settable sensor with time-out, designed to allow intelligent control of luminaires in combination with the DMRC210DA-RJ12 relay controller.

**Low profile design** – Flush-mounted 360 degree ceiling-mount motion detection (PIR) sensor.

**No software set-up** – All functionality can be achieved with the built-in DIP switches for area addressing, no-motion time-out and other advanced features.

**Rapid configuration** – Up to 31 individual addressing areas of control.

**User-selectable options** – No-motion time-out selectable to 30 seconds, 5 minutes, 15 minutes or 30 minutes.

**Corridor hold** – Links corridor areas with

adjacent rooms so corridor remains lit while occupancy is detected in adjacent rooms.

**Suitable for plenum use** – UL approved for installation in air-handling plenum spaces.

**Dimensions:**  
72 dia. x 41 mm (2.83 dia. x 1.61 in)

**Ordering Code:**  
12NC – 913703029309



# DUS360CR-D Multifunction Sensor

## Low profile recessed 360° ceiling sensor powered by the DALI network

The Philips Dynalite DUS360CR-D is a recess mountable 360 degree multifunction sensor that combines motion detection (PIR) and ambient light level detection (PE) in one device. The DUS360CR-D is powered and communicates to the networked control system via a DALI bus.

**Powered directly by the DALI network** – Eliminates the need for additional network field wiring.

**DALI multi-master device** – Designed to operate seamlessly with the Philips Dynalite DDBC120-DALI controller.

**Motion detection feature** – Detection of motion within a scanned area triggers a programmed lighting action.

**Segmented click-up bezel** – Surrounds the motion sensor element and enables a portion of the sensing field to be masked. This prevents nuisance detection from adjacent doorways or corridors.

**Daylight harvesting mode** – Delivers automatic energy savings.

**Ambient light level regulation** – In applications where it is critical to maintain precise light, the PE function reads ambient levels and adjusts artificial light levels accordingly.

**Infrared receive capability** – Enables sign-on identification to the networked system.

**Corridor hold** – Links corridor areas with adjacent rooms so corridor remains lit while occupancy is detected in adjacent rooms.

**Suitable for plenum use** – UL approved for installation in air-handling plenum spaces.



**Dimensions:**  
72 dia. x 41 mm (2.83 dia. x 1.61 in)

**Ordering Code:**  
12NC – 913703213009

# DUS360CS Multifunction Sensor

## Surface mount 360° ceiling sensor

The Philips Dynalite DUS360CS is a surface mountable 360 degree multifunction sensor that combines motion detection (PIR), infrared remote control reception (IR) and ambient light level detection (PE) into one device in applications such as hotels, restaurants and homes.

**Motion detection feature** – Detects the presence or absence of motion and adjusts lights accordingly.

**Segmented click-up bezel** – Surrounds the motion sensor element and enables a portion of the sensing field to be masked. This prevents nuisance detection from adjacent doorways or corridors.

**Ambient light level regulation** – In applications where it is critical to maintain precise light levels, the PE function reads ambient levels and adjusts artificial light accordingly.

**Daylight harvesting mode** – Delivers automatic energy savings.

**Infrared receive capability** – Manually adjust light levels using a hand-held remote control, via the inbuilt IR receiver.

**Corridor hold** – Links corridor areas with adjacent rooms so corridor remains lit while occupancy is detected in adjacent rooms.

**Dimensions:**  
105 x 46 mm (4.34 x 1.81 in)

**Ordering Code:**  
12NC – 913703243109





## DUS360CS-D Multifunction Sensor

### Surface mount 360° ceiling sensor

The Philips Dynalite DUS360CS-D is a surface mountable 360 degree multifunction sensor that combines motion detection (PIR), infrared remote control reception (IR) and ambient light level detection (PE) into one device in applications such as hotels, restaurants and homes.

**Powered directly by the DALI network**  
– Eliminates the need for additional network field wiring.

**DALI multi-master device** – Designed to operate seamlessly with the Philips Dynalite DDBC120-DALI controller.

**Motion detection feature** – Detects the presence or absence of motion and adjusts lights accordingly.

**Segmented click-up bezel** – Surrounds the motion sensor element and enables a portion of the sensing field to be masked. This prevents nuisance detection from adjacent doorways or corridors.

**Ambient light level regulation** – In applications where it is critical to maintain precise light levels, the PE

function reads ambient levels and adjusts artificial light accordingly.

**Daylight harvesting mode** – Delivers automatic energy savings.

**Infrared receive capability** – Manually adjust light levels using a hand-held remote control, via the inbuilt IR receiver.

**Corridor hold** – Links corridor areas with adjacent rooms so corridor remains lit while occupancy is detected in adjacent rooms.

**Dimensions:**  
105 x 46 mm (4.34 x 1.81 in)

**Ordering Code:**  
12NC – 913703023909



## DUS804CS-UP Multifunction Sensor

### Surface mount ceiling sensor with ultrasonic capability

The Philips Dynalite DUS804CS-UP is a surface mountable 360 degree multifunction sensor that combines ultrasonic (UP), motion detection (PIR), infrared remote control reception (IR) and ambient light level detection (PE) into one device in applications such as offices, industrial buildings and secure areas of public buildings.

**Motion detection feature** – Detection of motion within scanned area triggers a programmed lighting action. Ultrasonic technology enables motion detection behind fixed objects.

**Ambient light level regulation** – In applications where it is critical to maintain precise light levels, the PE function reads ambient levels and adjusts artificial light accordingly.

**Infrared receive capability** – Manually adjust light levels using a hand-held remote control, via the inbuilt IR receive sensor of the DUS804CS-UP.

**Daylight harvesting mode** – Delivers automatic energy savings.

**Corridor hold** – Links corridor areas with adjacent rooms so corridor remains lit while occupancy is detected in adjacent rooms.

**Dimensions:**  
90 dia. x 32 mm (3.54 dia. x 1.26 in)

**Ordering Code:**  
12NC – 913703070409



# DUS90CS Multifunction Sensor

## Wall/ceiling mount 90° multifunction sensor

The DUS90CS is wall or ceiling mountable multifunction sensor that combines motion detection (PIR), infrared remote control reception (IR) and ambient light level detection (PE) into one device in applications such as offices, industrial buildings and homes.

**Motion detection feature** – Detects the presence or absence of motion and adjusts lights accordingly.

**Ambient light level regulation** – In applications where it is necessary to maintain even lighting, the PE function reads ambient levels and adjusts artificial light accordingly.

**Daylight harvesting mode** – Delivers automatic energy savings.

**Infrared receive capability** – Manually adjust light levels using a hand-held remote control, via the inbuilt IR receive sensor.

**Multiple mounting options** – The sensor has a 30° scan pattern with flexible angle adjustment and can be recessed or surface mounted on a wall or ceiling.

**Corridor hold** – Links corridor areas with adjacent rooms so corridor remains lit while occupancy is detected in adjacent rooms.

**IP54 rating** – Dust- and splash-resistant housing allows installation in a variety of indoor and outdoor applications.

**Dimensions:**  
98 x 90 x 153 mm (3.86 x 3.54 x 6.02 in)

**Ordering Code:**  
12NC – 913703244209



# DUS30CS Multifunction Sensor

## Wall/ceiling mount 30° multifunction sensor

The DUS30CS is wall or ceiling mountable multifunction sensor that combines motion detection (PIR), infrared remote control reception (IR) and ambient light level detection (PE) into one device in applications such as offices, industrial buildings and homes.

**Motion detection feature** – Detects the presence or absence of motion and adjusts lights accordingly.

**Ambient light level regulation** – In applications where it is necessary to maintain even lighting, the PE function reads ambient levels and adjusts artificial light accordingly.

**Daylight harvesting mode** – Delivers automatic energy savings.

**Infrared receive capability** – Manually adjust light levels using a hand-held remote control, via the inbuilt IR receive sensor.

**Multiple mounting options** – The sensor has a 30° scan pattern with flexible angle adjustment and can be recessed or surface mounted on a wall or ceiling.

**Corridor hold** – Links corridor areas with adjacent rooms so corridor remains lit while occupancy is detected in adjacent rooms.

**IP54 rating** – Dust- and splash-resistant housing allows installation in a variety of indoor and outdoor applications.

**Dimensions:**  
98 x 90 x 153 mm (3.86 x 3.54 x 6.02 in)

**Ordering Code:**  
12NC – 913703244309



## DUS90AHB-D Multifunction Sensor

### Aisleway high bay DALI network sensor

The Philips Dynalite DUS90AHB-D is a 90 degree multifunction sensor that combines motion detection (PIR) and ambient light level detection (PE) in one device. The sensor uses the DALI protocol for power and communications to a network control system, eliminating the need for additional network field wiring. This sensor is ideal for mounting between warehouse shelving.

**DALI multi-master device** – Designed to operate seamlessly with the Philips Dynalite DDBC120-DALI controller.

**Powered directly by the DALI network** – Eliminates the need for any additional network field wiring.

**Motion detection feature** – Detects the presence or absence of motion and triggers a programmed action.

**Ambient light level detection** – In applications where it is critical to maintain precise lighting levels, the PE function reads ambient levels and adjusts artificial light accordingly.

**Daylight harvesting** – When used in conjunction with networked open loop daylight sensor.

**Infrared receive capability** – Enables sign-on identification to the networked system.

**Corridor hold** – Links corridor areas with adjacent rooms so corridor remains lit while occupancy is detected in adjacent rooms.

**Targeted positioning** – Directional wallmounting block allows sensors to be easily mounted and directed to the required area.

**Dimensions:**  
66 x 70 x 61 mm (2.60 x 2.76 x 2.40 in)

**Ordering Code:**  
12NC – 913703015409



## DUS90WHB-D Multifunction Sensor

### Wide angle high bay DALI network sensor

The Philips Dynalite DUS90WHB-D is a 90 degree multifunction sensor that combines motion detection (PIR) and ambient light level detection (PE) in one device. The sensor uses the DALI protocol for power and communications to a network control system, eliminating the need for additional network field wiring. This is a wide angle, general purpose sensor.

**DALI multi-master device** – Designed to operate seamlessly with the Philips Dynalite DDBC120-DALI controller.

**Powered directly by the DALI network** – Eliminates the need for any additional network field wiring.

**Motion detection feature** – Detects the presence or absence of motion and triggers a programmed action.

**Ambient light level detection** – In applications where it is critical to maintain precise lighting levels, the PE function reads ambient levels and adjusts artificial light accordingly.

**Daylight harvesting** – When used in conjunction with networked open loop daylight sensor.

**Infrared receive capability** – Enables sign-on identification to the networked system.

**Corridor hold** – Links corridor areas with adjacent rooms so corridor remains lit while occupancy is detected in adjacent rooms.

**Targeted positioning** – Directional wall-mounting block allows sensors to be easily mounted and directed to the required area.

**Dimensions:**  
66 x 70 x 61 mm (2.60 x 2.76 x 2.40 in)

**Ordering Code:**  
12NC – 913703015509





# DUS30LHB-D Multifunction Sensor

## Long-range high bay DALI network sensor

The Philips Dynalite DUS30LHB-D is a 30 degree multifunction sensor that combines motion detection (PIR) and ambient light level detection (PE) in one device. The sensor uses the DALI protocol for power and communications to a network control system, eliminating the need for additional network field wiring. This sensor is useful for long-range detection.

**DALI multi-master device** – Designed to operate seamlessly with the Philips Dynalite DDBC120-DALI controller.

**Powered directly by the DALI network** – Eliminates the need for any additional network field wiring.

**Motion detection feature** – Detects the presence or absence of motion and triggers a programmed action.

**Ambient light level detection** – In applications where it is critical to maintain precise lighting levels, the PE function reads ambient levels and adjusts artificial light accordingly.

**Daylight harvesting** – When used in conjunction with networked open loop daylight sensor.

**Infrared receive capability** – Enables sign-in identification to the networked system.

**Corridor hold** – Links corridor areas with adjacent rooms so corridor remains lit while occupancy is detected in adjacent rooms.

**Targeted positioning** – Directional wallmounting block allows sensors to be easily mounted and directed to the required area.

**Dimensions:**  
66 x 70 x 61 mm (2.60 x 2.76 x 2.40 in)

**Ordering Code:**  
12NC – 913703015609



# Relay Controllers



# DDRC-GRMS-E Multi-Protocol Switching Room Controller

## Fully networked relay control solution

The Philips Dynalite DDRC-GRMS-E controller is a compact, versatile room automation and energy management solution with bridging functionality between the Ethernet LAN and connected DyNet devices. Bespoke pre-configuration allows deployment without the need for commissioning software. Incorporating switching relays and DMX for dimming and color control, every aspect of this device has been designed to be feature-rich and cost-effective.

**Single box solution** – Compact design allows for small installation footprint and reduced cabling for a simpler and faster installation.

**Inbuilt Ethernet port** – Directly connecting to a site's Ethernet LAN, the device can securely report its status and pass network messages.

**Pre-programmed** – Can be preloaded with a bespoke configuration to immediately meet the project's needs from the moment it powers up.

**Powerful processor** – The internal processor allows the device to perform advanced scripted functions and provide automated intelligent responses to multiple inputs.

**Mixture of switching relays** – Supports a combination of different relay ratings and types for a perfect blend of performance and cost-effectiveness.

**18 dry contact inputs** – Allows simple integration with third-party devices and systems.

**32 channel DMX output** – Adds color and dimming control for a touch of theatrics.

**UL924 Input** – Integrates seamlessly with compatible emergency systems.

**Four 12 V digital outputs** – Designed to drive room status indicator LEDs in common cathode configuration, and trigger additional devices such as doorbells.



**300 mA DyNet output** – Directly support the requirements of DyNet devices without the need for an additional network power supply.

**Unique LAN addressing** – Two banks of DIP switches allow the installer to manually set the device's network identification..

**Dimensions:**  
105 x 216 x 74 mm (4.13 x 3.74 x 2.91 in)

**Ordering Code:**  
12NC – 913703334009

# DDRC420FR Relay Controller

## Robust control of switched loads

The Philips Dynalite DDRC420FR provides control of any type of switched load, including difficult lighting loads. This four-channel device supports all types of switched loads up to 20 A inductive.

**Feed-through power circuit design**  
– Electrically equivalent to a 4-pole contactor, with the added advantage of each pole being separately controllable via the DyNet network.

**Flexible mounting solution** – DIN-rail mountable device, designed to be installed into the distribution board supplying power to the controlled circuit.

**Inbuilt diagnostic functionality** – Features circuit run time tracking on each channel and Device Online/Offline status indication.

**Multiple wiring schemes supported**  
– Controls single phase and neutral or three phase and neutral (star) wiring configurations.

**Hardware override** – Service override switch accessible from front panel.

**Dimensions:**  
95 x 105 x 75 mm (3.74 x 4.34 x 2.95 in)

**Ordering Code:**  
12NC – 913703244609





## DDRC810DT-GL Relay Controller

### Designed to operate any type of switched load

The Philips Dynalite DDRC810DT-GL is ideal for controlling bi-directional motors, such as curtain and blind motors. It is an eight channel device suitable for any switched load up to 10 A per channel, with a maximum box load of 40 A.

**Voltage free changeover SPDT output relays** – Perfect for controlling bi-directional motors.

**Flexible mounting solution** – A DIN-rail mountable device, designed to be installed into the distribution board supplying power to the controlled circuit.

**Inbuilt diagnostic functionality** – Features circuit run time tracking on each channel.

**Standalone or networked operation** – Can operate as a discrete standalone unit, or as part of an integrated control system when connected to the DyNet network.

**Dry contact inputs** – The unit receives instructions from voltage-free button presses.

**Dimensions:**  
94 x 211 x 75 mm (3.70 x 8.31 x 2.95 in)

**Ordering Code:**  
12NC – 913703035209



## DDRC1220FR-GL Relay Controller

### Robust control of switched loads

The Philips Dynalite DDRC1220FR-GL provides control of multiple types of switched loads. This general-purpose 12-channel controller supports switched loads of up to 20 A per channel, up to a maximum device load of 180 A.

**Feed-through power circuit design** – Electrically equivalent to a 12-pole contactor, with the added advantage of each pole being separately controllable via the DyNet network.

**Flexible mounting solution** – DIN-rail mountable device, designed to be installed into the distribution board supplying power to the controlled circuit.

**Inbuilt diagnostic functionality** – Features circuit run time tracking on each channel and Device Online/Offline status indication.

**Multiple wiring schemes supported** – Controls single phase and neutral or three phase and neutral (star) wiring configurations.

**Hardware override** – Service override switch accessible from front panel.

**Dimensions:**  
93 x 215 x 64 mm (3.66 x 8.46 x 2.52 in)

**Ordering Code:**  
12NC – 913703243009



# DMRC210 Relay Controller

## Luminaire mount control of switched loads

The Philips Dynalite DMRC210 is a two channel device that provides intelligent networked control of individual lighting fixtures. The compact design enables mounting directly within the gear enclosure of many lighting fixtures.

**Incorporates two relay outputs** – Used to control mains supply to the fixture.

**Gear enclosure mounting** – Compact design allows the device to be mounted directly within the gear enclosure of many light fittings.

**Fully rated device** – Robust relays provide reliable control of difficult lighting loads.

**Inbuilt diagnostic functionality** – Features Device Online/Offline status indication.

**Dimensions:**  
240 x 45 x 38 mm (9.45 x 1.77 x 1.50 in)

**Ordering Code:**  
12NC – 913703050009



# Power Dimmers





# DDLE801 Leading Edge Dimmer Controller

## Superior LED dimming technology

The Philips Dynalite DDLE801 supports eight channels of leading edge dimming at 1 A per channel. It is suitable for use with incandescent lighting, as well as leading edge compatible magnetic and electronic transformers. Advanced LED dimming technology makes the unit particularly suited to residential, retail and hospitality applications.

**Active Load technology on each channel** – Dramatically improves LED dimming stability through detection of supply fluctuations and application of control compensation.

**Soft start and voltage regulation technologies** – Protects lamps from over voltage and dramatically improves lamp life, reducing maintenance costs.

**Superior internal drive componentry tuning** – Removes issues of ‘clipping’ that are normally associated with leading edge dimmers controlling LED lamps.

**Flexible mounting solution** – A DIN-rail mountable device, designed to be installed into the distribution board supplying power to the controlled circuit.

**Dimensions:**  
93 x 215 x 64 mm (3.66 x 8.46 x 2.52 in)

**Ordering Code:**  
12NC – 913703061509



# DDLE802 Leading Edge Dimmer Controller

## Direct dimming for a range of lighting loads

The Philips Dynalite DDLE802 is an eight-channel leading edge dimmer controller with a maximum load per channel of 2 A. It is suitable for use with incandescent, low voltage, neon and selected fluorescent fixtures.

**Optional manual override LED illuminated service switch** – Provides diagnostic and local override capability.

**Soft start and voltage regulation technologies** – Protects lamps from over voltage and dramatically improves lamp life, reducing maintenance costs.

**Naturally ventilated** – No forced cooling required, no maintenance required.

**Flexible mounting solution** – A DIN-rail mountable device, designed to be installed into the distribution board supplying power to the controlled circuit.

**Dimensions:**  
94 x 211 x 75 mm (3.70 x 8.31 x 2.95 in)

**Ordering Code:**

Standard product	12NC – 913703000009
Manual override	12NC – 913703000109





## DLE410 Leading Edge Dimmer Controller

### Compact wall mount direct dimming for a range of lighting loads

The Philips Dynalite DLE410 is a four-channel leading edge dimmer controller, with a maximum load per channel of 10 A. It is suitable for use with incandescent, neon and selected fluorescent light sources, as well as iron core and leading edge electronic transformers.

**Ideal for applications where multiple user settings are required** – Provides robust control in situations where a small number of lighting circuits require control.

**Interference suppression** – Iron powder core toroidal choke lessens effects of interference from other equipment, such as transformers.

**Naturally ventilated** – Requires no forced cooling or maintenance.

**Soft start and voltage regulation technologies** – Protects lamps from over voltage and dramatically improves lamp life, reducing maintenance costs.

**Diagnostic functionality** – Device Online/Offline status reporting.

**User controls** – Incorporates service override switch – all channels to 100%, a diagnostic LED and hardware bypass switches for each channel.

**Options available** – Additional earth leakage and overload protection on each channel.

**Dimensions:**  
340 x 212 x 174 mm (13.38 x 8.35 x 6.85 in)

**Ordering Code:**

Standard product	12NC – 913703006009
Earth leakage/overload protection (RCBO)	12NC – 913703006709



## DLE1205 Leading Edge Dimmer Controller

### Wall mount direct dimming for a range of lighting loads

The Philips Dynalite DLE1205 is a 12-channel leading edge dimmer controller with a maximum load per channel of 5 A. It is suitable for use with incandescent and neon light sources, as well as iron core and leading edge electronic transformers.

**Fully rated device** – The combination of load capacity and sub-circuit protection delivers a superior solution for small scale commercial applications.

**Interference suppression** – Iron powder core toroidal choke lessens effects of interference from other equipment, such as transformers.

**Naturally ventilated** – Requires no forced cooling or maintenance.

**Soft start and voltage regulation technologies** – Protects lamps from over voltage and dramatically improves lamp life, reducing maintenance costs.

**Diagnostic functionality** – Device Online/Offline status reporting.

**User controls** – Incorporates service override switch and three phase indicator LED. Hardware bypass switches are provided for each channel.

**Option available** – Earth leakage and overload protection on each channel.

**Dimensions:**  
620 x 255 x 176 mm (24.41 x 10.04 x 6.93 in)

**Ordering Code:**

Standard product	12NC – 913703010009
Earth leakage/overload protection (RCBO)	12NC – 913703010509



# DLE1210GL Leading Edge Dimmer Controller

## Control a range of loads in applications requiring reliability and large power handling

The Philips Dynalite DLE1210GL is a 12-channel leading edge dimmer controller, with a maximum load per channel of 10 A and total device load of 75 A. It is suitable for use with incandescent, neon and selected fluorescent light sources, as well as iron core and leading edge dimmable electronic transformers.

**Large load capability** – Ideal for applications that require reliability combined with large power handling.

**DMX512 compatibility** – Perfect for use in theaters, shopping centers and auditoria.

**Interference suppression** – Iron powder core toroidal choke lessens effects of interference from other equipment, such as transformers.

**Naturally ventilated** – Requires no forced cooling or maintenance.

**Soft start and voltage regulation technologies** – Protects lamps from over voltage and dramatically improves lamp life, reducing maintenance costs.

**Diagnostic functionality** – Device Online/Offline status reporting.

**User controls** – Incorporates service override switch and three phase indicator LED. Hardware bypass switches are provided for each channel.

**Option available** – Earth leakage and overload protection on each channel.

**Dimensions:**  
620 x 255 x 176 mm (24.41 x 10.04 x 6.93 in)

**Ordering Code:**

Standard product	12NC – 913703014009
Earth leakage/overload protection (RCBO)	12NC – 913703014409



# DLE220 Leading Edge Dimmer Controller

## Designed for applications where lamp life is critical

The Philips Dynalite DLE220 is a two-channel leading edge dimmer controller, with a maximum load of 20 A per channel. It is suitable for use with incandescent, neon and selected fluorescent light sources, as well as iron core and leading edge dimmable electronic transformers.

**Large load capability** – Complements multichannel dimmers by providing extra channels where additional capacity is required.

**Reliable control** – Suitable for applications where lamp life is critical, such as where lamp replacement is difficult or expensive.

**Interference suppression** – Iron powder core toroidal choke lessens effects of interference from other equipment, such as transformers.

**Naturally ventilated** – Requires no forced cooling or maintenance.

**Soft start and voltage regulation technologies** – Protects lamps from over voltage and dramatically improves lamp life, reducing maintenance costs.

**Diagnostic functionality** – Device Online/ Offline status reporting.

**User controls** – Incorporates service override switch – all channels to 100% and a diagnostic LED.

**Dimensions:**  
325 x 212 x 178 mm (12.79 x 8.35 x 7.01 in)

**Ordering Code:**

Standard product	12NC – 913703002009
------------------	---------------------



## DLE1220GL Leading Edge Dimmer Controller

### Control large loads in applications requiring large power handling

The Philips Dynalite DLE1220GL is a 12-channel leading edge dimmer controller, with a maximum load per channel of 20 A and total device load of 180 A. It is suitable for use with incandescent, neon and selected fluorescent light sources, as well as iron core and leading edge dimmable electronic transformers.

**Large load capability** – Ideal for applications that require reliability combined with large power handling.

**DMX512 compatibility** – Perfect for use in theaters, shopping centers and auditoria.

**Interference suppression** – Iron powder core toroidal choke lessens effects of interference from other equipment, such as transformers.

**Naturally ventilated** – Requires no forced cooling or maintenance.

**Soft start and voltage regulation technologies** – Protects lamps from over voltage and dramatically improves lamp life, reducing maintenance costs.

**Diagnostic functionality** – Device Online/Offline status reporting and channel override switches.

**User controls** – Incorporates service override switch and three phase indicator LED. Hardware bypass switches are provided for each channel.

**Option available** – Earth leakage and overload protection on each channel.

**Dimensions:**  
596 x 346 x 202 mm (23.46 x 13.62 x 7.95 in)

Ordering Code:	
Standard Product	12NC – 913703016009
Earth leakage/overload protection (RCBO)	12NC – 913703016609



## DTE1210 Trailing Edge Dimmer Controller

### Controls a wide range of dimmable electronic transformers

The Philips Dynalite DTE1210 trailing edge dimmer controller features 12 channels, with a maximum load per channel of 10 A and a total box load of 120 A. The trailing edge output makes the device suitable for control of both trailing and leading edge electronic transformers, as well as incandescent lamps and track lighting.

**Operates from three phase supply** – Using a three phase supply when connected to a three circuit track permits the track to be loaded to maximum rating.

**Dual communication ports** – Enable direct DMX512 integration with theatrical systems

**Voltage regulation and soft start technologies** – Protects lamps and extends life dramatically, minimizing re-lamping and ongoing maintenance requirements.

**Naturally ventilated** – Integral ventilation in the housing of the unit means that no forced cooling is required, thereby reducing maintenance.

**Interface to other devices** – Incorporates multipurpose programmable dry contact and analog inputs for interfacing to other devices.

**Internal controls** – Programmable logic controller capable of comprehensive conditional and sequential logic and arithmetic function processing.

**Options available** – Including earth leakage and overload protection on each channel, or three pole circuit breakers.

**Dimensions:**  
600 x 286 x 202 mm (23.62 x 11.46 x 7.95 in)

Ordering Code:	
Standard product	12NC – 913703022009
Earth leakage/overload protection (RCBO)	12NC – 913703022609
RCBO & 3 pole breakers	12NC – 913703021609



# DDLEDC605GL PWM Controller

## Directly drive LED fittings with PWM voltage-mode outputs

The Philips Dynalite DDLEDC605GL is designed to control LED loads in decorative architectural lighting applications where creative color mixing and sequencing is required. The controller provides six pulse width modulated common anode voltage mode outputs, suitable for directly driving high intensity LED sources. The controller is designed for connection to an external DC power supply, enabling the unit to deliver a range of nominal output voltages. The Philips Dynalite DDLEDC605GL is DMX512 compatible and is suitable for the high chase speeds commonly found in display lighting.

**Designed for connection to external power supply** – The device is connected to an external DC power supply, enabling the unit to deliver a range of nominal output voltages.

**DMX512 compatible** – Capable of receiving native DMX512, allowing use in color mixing or chase sequence applications, such as those found in display lighting.

**Diagnostic functionality** – Device Online/Offline status reporting.

**Flexible mounting solution** – A DIN-rail mountable device, designed to be installed into a distribution board or other electrical enclosure.

**Naturally ventilated** – Requires no forced cooling or maintenance.

**Dimensions:**  
95 x 105 x 75 mm (3.74 x 4.13 x 2.95 in)

**Ordering Code:**  
12NC – 913703061209





# Signal Dimmers

2H

RBS



# DDBC120-DALI Single-master DALI Driver Controller

## Enabling a full DALI universe including tunable white drivers, DALI sensors and user interfaces

The Philips Dynalite DDBC120-DALI delivers cost-effective control of DALI drivers through provision of a full universe of 64 DALI drivers. The controller communicates seamlessly with Philips Dynalite DALI sensors and user interface devices.

**Single-master solution** – Compatible with a range of DALI fittings and devices including DALI fluorescent drivers, DALI electronic low voltage transformers, DALI LED fixtures, DALI emergency lighting fixtures, and Philips Dynalite DALI multi-master sensors and user interfaces.

**Compatible with DALI 209 drivers** – Provides control of tunable white luminaires.

**DALI auto-enumeration** – Provides automatic enumeration of DALI ballasts when powered on and enables self-repair of the network system if a DALI driver fails.

**Fully scalable network solution** – Direct mapping from DALI to the DyNet network protocol eliminates DALI imposed limits, such as maximum group sizes.

**Dual functionality** – Leverage advantages of a true DALI network solution, whilst still allowing the full functionality of DyNet network control.

**Built-in energy savings** – Control signals can be configured to operate in tandem with the internal relay, which automatically isolates the power circuit when all associated channels are at 0%.

**Integral DALI bus power supply** – Removes the need for provision of a separate external power supply and reduces distribution board wiring complexity.

**Inbuilt diagnostic functionality** – Features lamp and driver failure reporting, driver run time tracking for each driver, emergency test reporting and Device Online/Offline status indication.



**Dimensions:**  
96 x 105 x 75 mm (3.78 x 4.34 x 2.95 in)

**Ordering Code:**  
12NC – 913703685109

# DDBC300-D DALI Driver Controller

## Cost-effective DALI control solution

The Philips Dynalite DDBC300-D delivers cost-effective control of DALI drivers through provision of three full universes totaling 192 DALI addresses.

**Compatible with a range of DALI fittings and devices** – Including DALI drivers, DALI electronic low voltage transformers and DALI LED fixtures.

**Fully scalable network solution** – Direct mapping from DALI to the DyNet network protocol eliminates DALI imposed limits, such as maximum group sizes.

**Flexible mounting solution** – A DIN-rail mountable device, designed to be installed into the distribution board supplying power to the controlled lighting circuit.

**Integral DALI bus power supply** – Removes the need for provision of a separate external power supply and reduces distribution board wiring complexity.

**Inbuilt diagnostic functionality** – Features lamp and driver failure reporting, driver run time tracking for each driver and Device Online/Offline status indication.

**Dimensions:**  
94 x 211 x 75 mm (3.70 x 8.31 x 2.95 in)

**Ordering Code:**  
12NC – 913703031109



# DDBC320-D DALI Driver Controller

## Power saving DALI control solution

The Philips Dynalite DDBC320-D features three DALI outputs, allowing control of up to 192 DALI devices. It also features 3 x 20 A feed-through switched circuits for DALI driver mains supply.

**Compatible with a range of DALI fittings and devices** – Including DALI drivers, DALI electronic low voltage transformers and DALI LED fixtures.

**Built-in energy savings** – Control signals can be programmed to operate in tandem with three internal switched outputs, which will automatically isolate the power circuit when all associated channels are at 0%. This is a useful feature as DALI drivers still draw significant power when lamps are turned off via a DALI command.

**Fully scalable network solution** – Direct mapping from DALI to the Philips Dynalite DyNet network protocol eliminates DALI imposed limits, such as maximum group sizes.

**Flexible mounting solution** – A DIN-rail mountable device, designed to be installed into the distribution board

supplying power to the controlled lighting circuit.

**Integral DALI bus power supply** – Removes the need for provision of a separate external power supply and reduces distribution board wiring complexity.

**Inbuilt diagnostic functionality** – Features lamp and driver failure reporting, driver run time tracking for each driver and Device Online/Offline status indication.

**Dimensions:**  
94 x 211 x 75 mm (3.70 x 8.31 x 2.95 in)

**Ordering Code:**  
12NC – 913703031209



# DDBC516FR Signal Dimmer Controller

## Flexible control of 1-10 V and DALI drivers

The Philips Dynalite DDBC516FR is a five-channel device for controlling DALI drivers. Each control output is selectable to DALI broadcast, DALI addressed, 1-10 V or DSI.

**Multiple protocols supported** – Each of the five control outputs supports DALI broadcast (maximum ten DALI loads/channel), DALI addressed (maximum ten DALI loads/channel), 1-10 V (maximum 10 mA sink or source/channel) or DSI (maximum five DSI loads/channel).

**Built-in energy savings** – Control signals can be programmed to operate in tandem with five internal switched outputs, which will automatically isolate the power circuit when all associated channels are at 0%. This is a useful feature as DALI drivers still draw significant power when lamps are turned off via a DALI command.

**Integral DALI bus power supply** – Removes the need for an additional external device.

**Flexible mounting solution** – A DIN-rail mountable device, designed to be installed into the distribution board supplying power to the controlled circuit.

**Inbuilt diagnostic functionality** – Features lamp and driver failure reporting, driver run time tracking for each driver and the switched output, as well as Device Online/Offline status indication.

**Dimensions:**  
94 x 211 x 75 mm (3.70 x 8.31 x 2.95 in)

**Ordering Code:**  
12NC – 913703031509



# DDBC1200 Signal Dimmer Controller

## Multi-protocol control solution

The Philips Dynalite DDBC1200 features 12 independent output channels, each selectable to DALI Broadcast, 1-10 V or DSI. The device can also be linked to a separate relay module for control of 1-10 V drivers.

### Multiple protocols supported –

Compatible with a range of fittings and devices including; DSI drivers, DSI electronic low voltage transformers, DALI drivers (broadcast mode only), DALI electronic low voltage transformers (broadcast mode only), 1-10 V drivers and devices that require 0-10 V analog control signals.

**LED status indicators** – Instant visual feedback on channel status of all 12 outputs.

**Flexible mounting solution** – A DIN-rail mountable device, designed to be installed into the distribution board supplying power to the controlled lighting circuit.

### Inbuilt diagnostic functionality –

Features Device Online/Offline status indication.

### Dimensions:

93 x 215 x 64 mm (3.66 x 8.46 x 2.52 in)

### Ordering Code:

12NC – 91370333909



# DBC1210 Signal Dimmer Controller

## Wall mount multi-protocol control solution

The Philips Dynalite DBC1210 is a 12-channel signal dimmer controller, featuring a maximum of load of 10 A per channel. It is designed for use with DALI, 1-10 V and DSI dimmable drivers and transformers.

### Multiple protocols supported –

Compatible with a range of fittings and devices including; DSI drivers, DSI electronic low voltage transformers, DALI drivers (broadcast mode only), DALI electronic low voltage transformers (broadcast mode only), 1-10 V drivers and other switched loads.

**Service override switch** – Incorporated as standard, forces all channels to 100%.

### Inbuilt diagnostic functionality –

Features Device Online/Offline status indication.

**Options available** – Additional earth leakage and overload protection on each channel.

### Dimensions:

Standard: 458 x 253 x 140 mm (18.31 x 9.96 x 5.51 in)

RCBO: 585 x 252 x 126 mm (23.03 x 9.92 x 4.96 in)

### Ordering Code:

Standard product	12NC – 913703036009
------------------	---------------------

Earth leakage/overload protection (RCBO)	12NC – 913703036509
------------------------------------------	---------------------





# DBC1220GL Signal Dimmer Controller

## Wall mount multi-protocol control solution for large lighting loads

The Philips Dynalite DBC1220GL is a 12-channel signal dimmer controller, featuring a maximum of load of 20 A per channel and a total device load of 180 A. It is designed for use with DALI, 1-10 V and DSI dimmable drivers and transformers.

### Multiple protocols supported –

Compatible with a range of fittings and devices including DSI drivers, DSI electronic low voltage transformers, DALI drivers (broadcast mode only), DALI electronic low voltage transformers (broadcast mode only), 1-10 V drivers and other switched loads.

**Service override switch** – Incorporated as standard, forces all channels to 100%.

**Inbuilt diagnostic functionality** – Features Device Online/Offline status indication.

**Options available** – Additional earth leakage and overload protection on each channel.

### Dimensions:

Standard: 458 x 253 x 140 mm (18.31 x 9.96 x 5.51 in)  
RCBO: 585 x 252 x 126 mm (23.03 x 9.92 x 4.96 in)

### Ordering Code:

Standard product	12NC – 913703038009
Earth leakage/overload protection (RCBO)	12NC – 913703038509



# DBC905 Signal Dimmer Controller

## Easy to install controller with flexible mounting options

The Philips Dynalite DBC905 is a nine-channel signal dimmer controller, designed for direct installation within ceiling cavities. The device incorporates structured wiring connectors, to enable ready connection without the use of tools.

**Multiple protocols supported** – Each control output supports DALI broadcast, DALI addressed, 1-10 V and DSI protocols.

**Integration ease** – The DBC905 integrates easily with a Building Management System (BMS) via the DyNet control network, making it ideally suited to commercial office installations.

**No tools required** – The device is available with connectors suited to three major modular wiring brands – CMS Electracom, Wieland and Wago.

**Inbuilt diagnostic functionality** – Includes lamp and driver failure, circuit run time tracking/lamp life, automated battery tests and Device Online/Offline status indication.

**High capacity option available** – Offers increased capacity, 200 A surge switched outputs and seven DALI loads or ten 1-10 V loads per channel.

### Dimensions:

189 x 416 x 35 mm (7.44 x 16.38 x 1.38 in)

### Ordering Code:

CMS connectors	12NC – 913703040509
Wieland connectors	12NC – 913703040009
Wago - high capacity	12NC – 913703040209
CMS - high capacity	12NC – 913703040609
Wieland - high capacity	12NC – 913703040109



# DMBC110 Signal Dimmer Controller

## Luminaire mount multi-protocol control solution

The Philips Dynalite DMBC110 provides intelligent networked control of individual lighting fixtures. The compact design enables mounting directly within the gear enclosure of many lighting fixtures.

**Incorporates one relay output and one signal dimmer output** – Provides dimming control of DALI, 1-10 V and DSI compatible drivers and transformers.

**Gear enclosure mounting** – Compact design allows the device to be mounted directly within the gear enclosure of many light fittings.

**Fully rated device** – Robust relay provides reliable control of difficult lighting loads.

**Inbuilt diagnostic functionality** – Features Device Online/Offline status indication.

**Dimensions:**  
240 x 45 x 38 mm (9.45 x 1.77 x 1.50 in)

**Ordering Code:**  
12NC – 913703030009







# Multipurpose Controllers



# DDMC802 Multipurpose Modular Controller

## Control different load types with one device

The Philips Dynalite DDMC802 provides up to eight configurable output channels, controlled by up to four interchangeable control modules. A selection of control modules is available for a variety of load types.

**Single controller solution** – Control a variety of load types from one device.

**Four module bays module** – Accommodates any combination of up to four single modules or two double-size modules.

**Leading edge phase control dimmer module** – Suitable for use with incandescent lamps and some types of dimmable electronic transformers.

**Trailing edge phase control dimmer module** – Suitable for use with most types of dimmable electronic transformers.

**Relay control module** – Suitable for controlling most types of switched loads.

**Fan control module** – 400 VA three-speed fan control.

**Curtain control module** – Provides control of curtains, blinds and other motorized window treatments.

**Flexible mounting solution** – DIN-rail mountable device, designed to be installed into the distribution board supplying power to the controlled circuit.

**Dimensions:**  
95 x 216 x 74 mm (3.74 x 8.50 x 2.91 in)

**Ordering Code:**  
12NC - 913703243509



### Modules:

DGCM102	1 x 2 A Motorized curtain/blind control	12NC – 913703024409
DGFM102	1 x 2 A Fan control	12NC – 913703026709
DGRM204	2 x 4 A Relay control	12NC – 913703261109
DGBM200	2 Channel Signal dimmer driver	12NC – 913703261209
DGLM105	1 x 5 A Leading edge dimmer	12NC – 913703260809
DGLM202	2 x 2 A Leading edge dimmer	12NC – 913703260909
DGLM402	4 x 2 A Leading edge dimmer	12NC – 913703261009
DGTM104	1 x 4 A Trailing edge dimmer	12NC – 913703260609
DGTM202	2 x 2 A Trailing edge dimmer	12NC – 913703260709
DGTM402	4 x 2 A Trailing edge dimmer	12NC – 913703024309

# DMC810GL Multipurpose Controller

## Combining leading edge and signal dimming control

The Philips Dynalite DMC810GL is an 8-channel controller that provides a combination of control technologies. The ability to control mixed load types from one device provides savings in initial capital costs, installation costs and a reduction in ongoing maintenance.

**Four channels for control of dimmable loads** – Leading edge phase control for use with incandescent, neon, leading edge electronic and iron core transformers.

**Four signal control outputs** – Selectable to 1-10 VDC, DSI and DALI broadcast for control of lamp drivers.

**Four switched outputs** – Signal control outputs can operate in tandem with, or separately from, switched outputs.

**Interference suppression** – Iron powder core toroidal choke lessens effects of interference from other equipment, such as transformers.

**Naturally ventilated** – Requires no forced cooling or maintenance.

**Diagnostic functionality** – Device Online/Offline status reporting.

**User controls** – Incorporates service override switch – all channels to 100% and a diagnostic LED.

**Options available** – Including an additional RS-485 DyNet/DMX512 port or earth leakage and overload protection on each channel.

**Dimensions:**  
366 x 212 x 179 mm (14.41 x 8.35 x 7.05 in)

### Ordering Code:

Standard product	12NC – 913703028009
Extra DyNet/DMX512 port	12NC – 913703028709
Earth leakage/overload protection (RCBO)	12NC – 913703028509
Dual Port & RCBO	12NC – 913703028909





## DMC2 Multipurpose Modular Controller

### Control different load types with one device

The Philips Dynalite DMC2 provides multichannel control via two interchangeable output modules. The device is available with a variety of control modules to handle various load types and capacities.

**Single controller solution** – Control a multitude of load types from one device, suited to any segment requiring lighting or relay control.

**Phase-cut dimmer module** – Selectable per channel for leading or trailing edge output. Compatible with most dimming loads.

**Signal dimming module** – Suitable for controlling 1–10 V, DSI and DALI broadcast drivers. Built-in relays remove power when channel level is at 0%.

**Relay control module** – Suitable for controlling most types of switched loads.

**Flexible mounting solution** – Surface or recess mountable enclosure.

**Passive cooling** – Fanless design reduces noise, power consumption and maintenance costs

**Dimensions:**  
540 x 380 x 103 mm (21.26 x 14.96 x 4.06 in)

**Ordering Code:**

DMC2-CE	12NC – 913703666109
DMC2-UL	12NC – 913703666009

For modules, please refer to datasheet.



## DMC4 Multipurpose Modular Controller

### Control different load types with one device

The Philips Dynalite DMC4 provides multichannel control via four interchangeable output modules. The device is available with a variety of control modules to handle various load types and capacities.

**Single controller solution** – Control a multitude of load types from one device, suited to any segment requiring lighting or relay control.

**Phase-cut dimming module** – Selectable per channel for leading or trailing edge output. Compatible with most dimming loads.

**Signal dimming module** – Suitable for controlling 1–10 V, DSI and DALI broadcast drivers. Built-in relays remove power when channel level is at 0%.

**Relay control module** – Suitable for controlling most types of switched loads.

**Flexible mounting solution** – Surface or recess mountable enclosure.

**Passive cooling** – Fanless design reduces noise, power consumption and maintenance costs.

**Dimensions:**  
830 x 455 x 106 mm (32.68 x 17.91 x 4.17 in)

**Ordering Code:**

DMC4-CE	12NC – 913703667909
DMC4-UL	12NC – 913703667809

For modules, please refer to datasheet.



# DMC Control Modules

Name	Description	Ordering Code
DSM2	DMC2 Supply module	12NC – 913703500509
DSM4	DMC4 Supply module	12NC – 913703668009
DCM-DyNet	DyNet Comms module	12NC – 913703666209
DMD310-CE	3 x 10 A Signal dimmer driver	12NC – 913703666609
DMD310-RCBO-CE	3 x 10 A Signal dimmer driver	12NC – 913703667109
DMD316-CE	3 x 16 A Signal dimmer driver	12NC – 913703666709
DMD316-RCBO-CE	3 x 16 A Signal dimmer driver	12NC – 913703667209
DMD316-UL	3 x 16 A Signal dimmer driver	12NC – 913703667509
DMD316FR-UL	3 x 16 A Signal dimmer driver	12NC – 913703668709
DMR310-CE	3 x 10 A Relay controller	12NC – 913703666409
DMR310-RCBO-CE	3 x 10 A Relay controller	12NC – 913703666909
DMR316-CE	3 x 16 A Relay controller	12NC – 913703666509
DMR316-RCBO-CE	3 x 16 A Relay controller	12NC – 913703667009
DMR316-UL	3 x 16 A Relay controller	12NC – 913703667409
DMR610GL-CE	6 x 10 A Relay controller	12NC – 913703668209
DMR610GL-RCBO-CE	6 x 10 A Relay controller	12NC – 913703668309
DMR610GL-UL	6 x 10 A Relay controller	12NC – 913703668109
DMP310GL-CE	3 x 10 A Phase-cut dimmer	12NC – 93703666809
DMP310GL-RCBO-CE	3 x 10 A Phase-cut dimmer	12NC – 913703667309
DMP310GL-UL	3 x 10 A Phase-cut dimmer	12NC – 913703667609
DMP603GL-CE	6 x 3 A Phase-cut dimmer	12NC – 913703668509
DMP603GL-RCBO-CE	6 x 3 A Phase-cut dimmer	12NC – 913703668609
DMP603GL-UL	6 x 3 A Phase-cut dimmer	12NC – 913703668409
DMP116	1 x 16 A Phase-cut dimmer	12NC – 913703348309

A large, mature tree with a thick trunk and dense foliage is illuminated from below, casting a warm glow. The tree stands on a grassy area next to a swimming pool. The pool is lit with a vibrant blue light, and its surface reflects the tree and the surrounding environment. In the foreground, several white lounge chairs are arranged on a dark deck. In the background, a body of water is visible, with distant lights from a town or city on the horizon under a dark blue night sky. A tall, thin light pole stands near the tree, and a small building is partially visible behind it.

# Integration Devices

**Kube Hotel**  
Saint Tropez, France



# DDNG232 RS-232 Network Gateway

## DIN-rail serial port integration

The Philips Dynalite DDNG232 network gateway provides cost-effective serial port integration between a DyNet network and third-party systems.

**Seamless integration with third-party systems** – Including AV systems, lighting desks, data projectors, HVAC, BMS and security systems.

**Internal controls** – Programmable logic controller capable of comprehensive conditional and sequential logic and arithmetic function processing.

**Predefined data format library or create your own** – A library of data formats is available for systems integrators, or can be created using the onboard conditional logic engine to assemble and transmit user-defined data strings.

**Macro functions available** – To simplify the control of multiple devices.

**Flexible mounting solution** – DIN-rail mountable, designed to be installed into a distribution board or other electrical enclosure.

**Dimensions:**  
94 x 211 x 75 mm (3.70 x 8.31 x 2.95 in)

**Ordering Code:**  
12NC – 913703081809



# DDNG-BACnet BACnet Network Gateway

## High level BACnet network integration

The Philips Dynalite DDNG-BACnet enables high level integration between a Philips Dynalite system and any building management system (BMS) that uses the BACnet protocol.

**Direct control of lighting system** – Permits direct control of the lighting system via the building's BMS network.

**Capability** – N4 Platform, 25 Devices / 1250 Points.

**Interrogation ability** – Allows interrogation of any area within the network for feedback of current lighting status.

**A range of options** – Provides solutions suitable for both small and large-scale installations.

**Dimensions:**  
110 x 179 x 61 mm (4.33 x 7.05 x 2.40 in)

**Ordering Code:**

DDNG-BACnet	J-8025 N4 Platform	12NC – 913703247009
BACNET-DRIVER	DyNet driver and license	12NC – 913703097109



# DDNG-KNX KNX Network Gateway

## High level KNX integration

The Philips Dynalite DDNG-KNX allows for high level integration between a Philips Dynalite system and BMS using the KNX protocol.

**Directly trigger tasks** – Use the building management system (BMS) to directly control DyNet functions.

**Status request** – Interrogate a Philips Dynalite system to request current status information.

**User controls included** – DyNet/KNX service switches and DyNet/KNX diagnostic LEDs.

**Dimensions:**  
95 x 105 x 75 mm (3.74 x 4.34 x 2.95 in)

**Ordering Code:**  
12NC – 913703080509



# DLLI8I8O Dry Contact Interface

## Eight-way dry contact interface

The Philips Dynalite DLLI8I8O is an eight-way dry contact interface with LED indicator outputs, that allows mechanical and electronic switches to communicate directly to the DyNet network.

**Compact size** – Allows installation in electrical wall boxes for easy integration with third-party user interfaces.

**Eight dry contact inputs** – Each dry contact trigger is individually programmable for a range of tasks.

**Eight indicator outputs** – Each output is individually programmable to drive an external LED indicator sharing a common cathode, communicating current system status or settings.

**Allows up to 20 m cable runs** – Enables convenient connection to dry contact interfaces in multiple rooms.

**Dimensions:**  
53 x 30 x 15 mm (2.09 x 1.18 x 0.59 in)

**Ordering Code:**  
12NC – 913703023009



# DPMI940-D Dry Contact Interface

## Four-way DALI dry contact interface

The Philips Dynalite DPMI940-D is a four-channel input dry contact interface, designed to allow mechanical and electronic switches to interface directly with a DALI network and a Philips Dynalite system.

**Fully programmable** – Each individual input is fully software programmable over the DALI network, allowing for multiple functions to be performed such as select lighting scene, room join or toggle lighting on/off.

**DALI multi-master device** – Designed to operate seamlessly with the Philips Dynalite DDBC120-DALI controller.

**Powered directly by the DALI network** – Eliminates the need for any additional network field wiring.

**Compact size** – Inputs are presented on flyleads, making the device suitable for installation behind multi-gang switch grids.

**Simple dry contact interface** – Can be used for low level integration to third-party systems such as security and air conditioning so that the lighting can be coordinated together with other services found within a project.

**Dimensions:**  
Housing: 18 x 34 x 53 mm (0.71 x 1.34 x 2.09 in)  
Flyleads: 165 mm (6.50 in) long with bootlace

**Ordering Code:**  
12NC – 913703080609



# DDMIDC8 Low Level Input Integrator

## Flexible input integration

The Philips Dynalite DDMIDC8 is designed to enable cost-effective input integration to the Philips Dynalite control system from third-party systems such as security, HVAC and BMS.

**Eight digital inputs** – Each can be individually configured as a dry contact or 0-24V AC/DC input.

**LED indicator on each input** – Provides visual status indication.

**Optical isolation** – All inputs isolated for high noise immunity.

**Four 0-5/0-10 V analogue inputs** – Software selectable.

**Programmable Logic Controller** – Processes comprehensive conditional and sequential logic and arithmetic functions.

**Dimensions:**  
95 x 105 x 75 mm (3.74 x 4.34 x 2.95 in)

**Ordering Code:**  
12NC – 913703081109





## DDFCUC010 Fan Coil Unit Controller

### Direct control of air conditioning

The Philips Dynalite DDFCUC010 is a fan coil unit controller designed for direct connection to components commonly found in air conditioning systems.

**0-10 V outputs** – Provided for controlling hot and cold-water valves.

**Relay outputs** – Provided for driving fan motors.

**High capacity relay** – Provided for use with electrical heaters or power outlet switching.

**Inputs for resistive temperature sensors**

– Allows the device to use data from a local temperature sensor or a networked temperature sensor, such as an Antumbra user interface.

**Programmable auxiliary inputs** –

Provided for use with peripheral devices including smoke detectors, motion detectors, window open/close sensors, airflow detectors, drip trays, dirty air filters and hot water on cold valve.

**Networkable** – Can be networked with other equipment including Philips Dynalite user interfaces, via an on-board RS-485 DyNet port.

**Dimensions:**  
94 x 211 x 75 mm (3.70 x 8.31 x 2.95 in)

**Ordering Code:**  
12NC – 913703081909



## DDFCUC024 Fan Coil Unit Controller

### Direct control of air conditioning

The Philips Dynalite DDFCUC024 is a fan coil unit controller designed for direct connection to components commonly found in air conditioning systems. Triac outputs are provided for controlling hot and cold-water valves, relay outputs are provided for driving fan motors and a high capacity relay output is available for electrical heaters.

**0-24 V outputs** – Provided for controlling hot and cold-water valves.

**Relay outputs** – Provided for driving fan motors.

**High capacity relay** – Provided for use with electrical heaters or power outlet switching.

**Inputs for resistive temperature sensors**

– Allows the device to use data from a local temperature sensor or a networked temperature sensor, such as an Antumbra user interface.

**Programmable auxiliary inputs** –

Provided for use with peripheral devices including smoke detectors, motion detectors, window open/close sensors, airflow detectors, drip trays, dirty air filters and hot water on cold valve.

**Networkable** – Can be networked with other equipment including Philips Dynalite user interfaces, via an on-board RS-485 DyNet port.

**Dimensions:**  
94 x 211 x 75 mm (3.70 x 8.31 x 2.95 in)

**Ordering Code:**  
12NC – 913703081009





# Wireless Devices

Optus Stadium  
Perth, Australia

## PDZG-E ZigBee Gateway

### Reliable wireless lighting control

The Philips Dynalite ZigBee Gateway Ethernet is a wireless communication hub that connects up to 25 SNS401CMP Wireless Group Controller in a Philips Dynalite lighting control system. The PDZG-E translates between Ethernet and ZigBee.

**ZigBee PRO wireless communication** – Seamlessly integrates wireless lighting control into a Philips Dynalite system without expensive control wiring.

**Wireless mesh network** – Ensures stable and robust lighting control in busy environments.

**Fully compatible with the Dynalite portfolio** – Connect to a Dynalite system through the Ethernet connection. Configure using System Builder.

**Wall mount bracket included** – Easy to mount on any wall type.

**Dimensions:**  
91 x 91 x 26 mm (3.58 x 3.58 x 1.02 in)

**Ordering Code:**  
12NC – 913703245409  
(Available early 2020)



## SNS401CMP Wireless Group Controller

### Wireless control in a small form factor.

The Philips Dynalite SNS401CMP receives DyNet commands over ZigBee from the PDZG-E wireless gateway, and sends DALI messages over an SR bus. This compact device enables control of a single DALI Broadcast channel via a Philips Xitanium SR Bridge, or a 1-10V channel via a Philips Advance SR Bridge. It also features an occupancy and daylight sensor to control the fixtures connected to the SR bridge.

**ZigBee PRO wireless communication** – Seamlessly integrates wireless lighting control into a Philips Dynalite system without expensive control wiring.

**Wireless mesh network** – Ensures stable and robust lighting control in busy environments.

**Control a single DALI broadcast or 1-10V channel** – Should be used in combination with a Philips Xitanium SR Bridge or a Philips Advance SR bridge.

**Small form-factor with attached mounting clips** – Enables easy installation in recessed ceilings.

**Infrared receiver** – Allows easy commissioning into wireless network from the floor using an IR remote, with no need for physical access to the device.

**Motion detection feature** – Detects the presence or absence of motion and adjusts lights accordingly.

**Segmented click-up bezel** – Surrounds the motion sensor element and enables a portion of the sensing field to be masked. This prevents nuisance detection from adjacent doorways or corridors.

**Ambient light level regulation** – In applications where it is critical to maintain precise light levels, the PE sensor reads ambient levels and adjusts artificial light accordingly.

**Luminaire accessory variant available** – An SNS401 without ceiling mount bracket is available for the design of dedicated luminaire accessories (Wireless Group Controllers).



**Dimensions:**  
46 x 74 mm (1.81 x 2.91 in)

**Ordering Code:**

SNS401CMP/w (EU version)	12NC – 929002108706
SNS401/w (EU version, no ceiling mount bracket)	12NC – 929001657006
SNS401/w (NA version, no ceiling mount bracket)	12NC – 929001657013
<b>Accessories:</b>	
IRT9015/00 (RC5 IR remote control)	12NC – 913700396703
Philips Xitanium SR Bridge independent (DALI)	12NC – 929001546506
Philips Advance Xitanium SR Bridge (0-10V), SRB-LD (side entry)	10NC – 9290007803
Philips Advance Xitanium SR Bridge (0-10V), SRB-BS (bottom entry)	10NC – 9290007802

(Available early 2020)



A grand, ornate hotel lobby with a large crystal chandelier, a marble column, and a patterned carpet. The ceiling is high and features recessed lighting and a large, multi-tiered crystal chandelier. A prominent white marble column with a gold-colored capital stands in the center. The walls are dark wood-paneled, and the floor is covered in a dark carpet with a large, intricate floral pattern in gold and red. In the background, there are glass-walled rooms and a small table with two lamps.

# Network Devices

# PDDEG-S Ethernet Gateway - Supervisor

## Secure remote connection to the Dynalite System

(Available 2021)

The Philips Dynalite PDDEG-S provides gateway services between Ethernet and DyNet devices, enabling secure online access to the Philips lighting control system. The gateway enables lighting control via a dedicated Philips app, and access to the timeclock, schedule editor and diagnostic functions via an inbuilt web server.

### System supervisory functions –

Includes online/offline status reporting for connected devices, network traffic logging, secure remote firmware update and lighting control metrics. Inbuilt timeclock and schedule manager allow the user to manage automated operations and task scheduling.

**Multiple integration options.** – Supports TCP/UDP, IPv4/IPv6, unicast/multicast/broadcast, DyNet1, DyNet2, Fidelio and 'Text and Binary Integration' protocols.

Capable of supporting hundreds of socket connections concurrently.

**Flexible connectivity options** – provides secure cloud connectivity to the building

with user configurable routing and a choice of RS-485 and Ethernet bridging functions.

**Powerful custom task engine** – Allows users or third-party systems to run macros such as 'After Hours', 'Shut Down', 'Welcome' and more.

### Web server and app access –

Enables remote access for lighting control, schedule editing and device configuration.

### Dimensions:

95 x 216 x 65 mm (3.74 x 8.50 x 2.56 in)

### Ordering Code:

12NC – 913703027409  
(Available early 2020)



# PDEG Ethernet Gateway

## Flexible Ethernet integration

The Philips Dynalite PDEG provides a multipurpose Ethernet connection to a Philips lighting control system. It supports access to the lighting system via a dedicated Philips app as well as providing a web interface delivering access to the inbuilt timeclock and schedule editor functions. It provides bridging functionality between Ethernet backbone and the DyNet fieldbus devices.

**Large storage capacity** – The device stores large project files internally, which apps use to automatically configure their settings. This saves configuration time and ensures accuracy for phone and tablet control.

**Built-in web server** – Provides control and status via Common Gateway Interface (CGI) protocol. Allows the user to edit and check system settings via the Network Hardware Checker and System Roll Call tools.

**No technical skills needed** – Inbuilt timeclock and schedule manager allow the user to manage operation and task scheduling without advanced technical knowledge.

**Powerful custom task engine** – Allows users or third-party systems to run macros, such as 'After Hours', 'Shut Down', 'Welcome' and more.

**Advanced interoperability** – Supports management of Philips Dynalite and Philips PoE fittings on a single system.

### Dimensions:

97 x 110 x 38 mm (3.82 x 4.33 x 1.50 in)

### Ordering Code:

12NC – 913703013809





# PDEB Ethernet Bridge

## Inexpensive Ethernet integration

The Philips Dynalite Ethernet Bridge provides a standard Ethernet connection to a Philips lighting control system in applications ranging from tunnels to hotel rooms. It provides bridging functionality between an Ethernet backbone and DyNet devices.

**Powerful custom task engine** – Allows users or third-party systems to run macros such as 'After Hours', 'Shut Down', 'Welcome' and more.

**Versatile mounting options** – Hybrid mounting clips allow the device to be mounted on a DIN-rail or to any flat surface.

**Dimensions:**

97 x 110 x 38 mm (3.82 x 4.33 x 1.50 in)

**Ordering Code:**

12NC – 913703240009



# DDNG485 RS-485/DMX512 Gateway

## Flexible network communications gateway

The Philips Dynalite DDNG485 is a flexible network communications bridge designed for RS-485 networks. The two opto-isolated RS-485 ports enable the DDNG485 to implement a trunk and spur topology on large project sites, with the bridge providing a high-speed backbone opto-coupled to many lower speed spurs.

**Route DyNet to third-party systems**

– Such as audio-visual, Somfy blind controllers, Modbus meters and building automation systems, providing an integrated approach to total building control and energy management.

**DMX512 mode** – Transmit or receive up to 64 channels of DMX512, with automatic DyNet conversion and task triggering. Provides temporary control of house lights from the DMX512 console in an auditorium scenario.

**Electrical fault isolation** – Faults can be isolated to individual network spurs.

**Internal controls** – Programmable logic controller capable of comprehensive conditional and sequential logic and arithmetic function processing, packet filtering and DyNet to DyNet 2 translation.

**Flexible mounting solution** – DIN-rail mountable, designed to be installed into a distribution board or other electrical enclosure.

**Dimensions:**

95 x 105 x 75 mm (3.74 x 4.34 x 2.95 in)

**Ordering Code:**

12NC – 913703081209





## DDNI485 Passive Gateway

### Cost-effective optical isolation

The Philips Dynalite DDNI485 is a passive network gateway designed to provide a cost-effective optical isolation solution.

**Electrical fault isolation** – Two opto-isolated RS-485 ports enable the DDNI485 to implement network segmentation, electrically isolating each spur and containing network faults.

**Passive device** – Does not require programming.

**Flexible mounting solution** – DIN-rail mountable, designed to be installed into a distribution board or other electrical enclosure.

**Dimensions:**  
95 x 105 x 75 mm (3.74 x 4.34 x 2.95 in)

**Ordering Code:**  
12NC – 913703081309



## DDTC001 Timeclock

### Astronomical 365 day timeclock

The Philips Dynalite DDTC001 timeclock provides a tamper resistant solution for time-based event control on a DyNet network.

**Remote programming** – The device is programmed via a PC and there are no external controls available, providing a tamper resistant solution.

**Advanced clock controls** – Features sunrise/sunset tracking and automatic adjustment for daylight saving.

**Performs as an energy management controller** – Uses powerful macro and conditional logic functions to provide full automation of large commercial projects, where automatic lighting events are required at predetermined times.

**Flexible mounting solution** – DIN-rail mounted device, designed to be installed into a distribution board.

**Dimensions:**  
86 x 35 x 58 mm ( 3.34 x 1.38 x 2.28 in)

**Ordering Code:**  
12NC – 913703074009



# DTK622-USB PC Node

## PC connection node

The Philips Dynalite DTK622-USB is a PC node that provides a connection to a PC using a USB connection.

**Useful interface for any PC** – Complete access to all network messages present on the DyNet network.

**Dimensions:**  
24 x 51 x 91 mm (0.94 x 2.01 x 3.58 in)

**Ordering Code:**  
12NC - 913703090209

**Commissioning and maintenance tool** – To be used in conjunction with any of the Philips Dynalite software, this PC node can be used to commission, diagnose or repair with Philips Dynalite System Builder.

**Permanent PC connection** – Can be used as a permanent gateway to the system for the Philips Dynalite System Manager head-end software.

**Complete solution** – Includes USB flash drive with the required drivers.



# DTK622-232 Serial Port Node

## Serial port connection node

The Philips Dynalite DTK622 is a network gateway that provides passive integration to a PC or RS-232 system.

**Full duplex integration** – Useful for linking a Philips Dynalite system with an AV or air conditioning system that supports RS-232.

**Dimensions:**  
24 x 51 x 91 mm (0.94 x 2.01 x 3.58 in)

**Ordering Code:**  
12NC - 913703090109





# Electrical Accessories

1 Shelley St,  
Sydney, Australia



# PAEFE Antumbra Electrical Frames

## Power, data, and audiovisual wiring frames

(Available 2021)

Stylish wiring solutions for any project.

Dynalite has partnered with Simon Electric to exclusively provide the perfect combination of power and connectivity options for a complete project offering.

Our frames, available in one- to four-gang sizes, are designed to match Antumbra European panels in size and color.



**Antumbra styling** – Designed to match the Antumbra range of user interfaces for a consistent look and feel throughout your project.

**Dimensions:**  
 88 x 88 x 5 mm (3.46 x 3.46 x 0.20 in)  
 176 x 88 x 5 mm (6.93 x 3.46 x 0.20 in)  
 264 x 88 x 5 mm (10.39 x 3.46 x 0.20 in)  
 352 x 88 x 5 mm (13.86 x 3.46 x 0.20 in)

**Range of frame sizes** – Holds any combination of one to four modules per frame.

**Décor-matching options** – Frames and modules are available in a range of attractive metallic finishes.

**Designed to pair with any electrical module from the Simon Electric V8 range** – Mains outlets, networking ports, audiovisual connectors, room status indicators, doorbells, and more.

**Ordering Codes:**

Metal Frame Plastic Rim & Inset	Aluminium Black	Gold White	Jet Grey Black	Noir Black	Prestige Black	Vintage Black
	913703062109	913703064609	913703061909	913703061709	913703064509	913703061809
	913703065109	913703070709	913703064909	913703064709	913703070609	913703064809
	913703071609	913703071809	913703071509	913703070809	913703071709	913703070909
	913703072509	913703072709	913703072409	913703072209	913703072609	913703072309

# DDNP1501 Network Power Supply

## Supplements DyNet network DC supply

The Philips Dynalite DDNP1501 is a 15 V DC 1.5 A regulated power supply designed to supplement the DyNet network DC supply.

**No manual selection required** – The switch-mode design allows the device to be used with a range of input voltages.

**Dimensions:**  
 95 x 105 x 75 mm (3.74 x 4.34 x 2.95 in)

**Used when high consumption devices are employed** – The DyNet network is self-powered via built-in DC supplies integrated within all mains powered devices. Use of high consumption devices, such as edge-lit touchscreens, can necessitate a requirement for additional power.

**Ordering Code:**  
 12NC – 913703090309

**Flexible mounting solution** – A DIN-rail mountable device, with a circuit breaker profile designed to be installed into all types of distribution board enclosures, including those with cover apertures specifically designed for circuit breakers.



## DDPB22-RJ12 Network Junction Box

### Providing installers with flexible networking options onsite

The Philips Dyalite DDPB22-RJ12 facilitates termination of 22 DyNet flat cables in one location. Flat data cable is specifically designed for high reliability localized network wiring.

**Acts as a junction box** – Provides flexible networking options.

**Facilitates faster installation** – The device takes advantage of the RJ12 connection system, allowing for a quick install and simple implementation of a star network topology.

**Complements DyNet flat cable** – Cable is available in 200 m (656.17 ft) roll or pre-terminated leads of 3, 5 and 10 m (9.84, 16.40, and 32.81 ft).

**Dimensions:**  
94 x 211 x 75 mm (3.70 x 8.31 x 2.95 in)

**Ordering Code:**  
12NC - 913703097809



## DMAL120F Active Load

### Reduces lamp flicker and improves dimming performance

The Philips Dyalite DMAL120F provides correct load conditions for leading edge dimmers, delivering improved dimming performance and reduced lamp flicker in LED and CFL light sources. It achieves this by connecting across the line and neutral wires at any point along a lighting circuit.

**Reduces capital outlay** – Allows continued use of leading edge dimming methodology when lamps have been updated to more efficient LED and CFL technologies.

**Equally suitable for trailing edge dimming** – Delivers a better dimming range on LED and CFL light sources.

**Compact design** – Enables the unit to be mounted directly within the same enclosure as the load controller, or in the field with LED & CFL lamps.

**Note** – This device is not suitable for elimination of LED flicker resulting from mains supply instability.

**Dimensions:**  
240 x 45 x 38 mm (9.45 x 1.77 x 1.50 in)

**Ordering Code:**  
12NC - 913703061609



# DyNet-STP-CABLE-LSZH Cat5 Cable

## 100 MHz 100 Ω STP 4 pair Cat5e

DyNet data cable is specifically designed for high reliability RS-485 network wiring. In addition to a twisted pair for RS-485 data, conductors are provided to supply DC power to network powered devices.

**Overall shield for maximum data integrity** – The data cable is flexible and all conductors are stranded.

**Fast termination** – Designed for robust termination into pressure-plate style terminals.

**Extra thick outer jacket** – Mains rated for use in distribution boards.

**Supplied in 305 meter roll.**

**Dimensions:**  
Cable length: 305 m (1000.61 ft)

**Ordering Code:**  
12NC – 913703898809



# DyNet-SFLAT6-CABLE Flat Cable

## Cable roll and cable kits for faster installation

Flat data cable is specifically designed for high reliability localized network wiring. In addition to a conductor pair for data, conductors are provided to supply DC power to network powered devices.

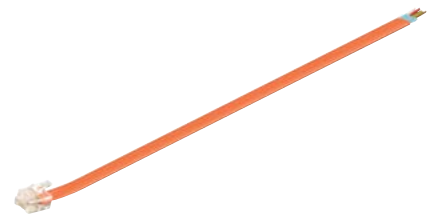
**Overall shield for maximum data integrity** – The data cable is flexible and all conductors are stranded.

**Fast termination** – Designed for rapid crimp termination into RJ12 plugs for use with Philips Dynalite products supporting RJ12 sockets.

**Supply options** – Available in 200 m (656.17 ft) rolls or in pre-terminated leads of 0.5, 5 and 10 m (1.64, 16.40 and 32.81 ft) lengths.

**Utilize DDPB22-RJ12 network junction box for faster installation** – Facilitates termination of 22 DyNet flat cables in one location.

Ordering Code:	
200 m (656.17 ft) roll	12NC – 913703095009
10 m (32.81 ft) lead	12NC – 913703898909
5 m (16.40 ft) lead	12NC – 913703899009
0.5 m (1.64 ft) lead	12NC – 913703899109





# DH2X24 DIN Rail Enclosure

## Safe, flexible housing for DIN rail devices

The Philips Dynalite DH2X24 is a wall-mounted enclosure with two 24-unit DIN rails, designed for easy mounting and housing of Dynalite DIN rail products. The enclosure includes a removable front cover, removable DIN rail plate, and a variety of cabling knockouts along the side, top and bottom for safe and convenient installation.

**Galvanized steel body** – Extremely durable construction, designed to keep housed devices safe.

**Passive cooling** – Sufficient ventilation to accommodate any combination of Dynalite DIN rail dimming controllers at up to 70% of their rated loads.

**Removable DIN rail plate** – Allows you to mount devices outside of the enclosure, or run wiring behind the plate to maintain segregation.

**Designed to hold up to four 12-unit DIN rail devices** – or any combination of smaller devices, up to 24 units per rail.

**Dimensions:**  
410 x 494 x 107 mm (16.14 x 19.45 x 4.21 in)

**Ordering Code:**  
12NC - 913703339909



# Wired Systems



China Resources Headquarters  
Shenzhen, China

# PDUVCC UV-C control system

## Control solution for UV-C surface disinfection systems

The Philips Dynalite PDUVCC control solution is a vital part of a properly designed and installed UV-C lighting system, that allows the system to be used and operated with greater safety than a system without an equivalent control solution in place.

This preconfigured solution incorporates switched outputs for driving Philips UV-C lamps and third-party audio alarms and warning lights. It also features an onboard settings interface, authorized key switch activation, lamp maintenance reporting, integrated Dynalite motion sensors, checkpoint buttons, and inputs for third-party emergency shutoff buttons and area safeguard door switches.

**Single-box solution** – Assembled, programmed, and tested in the factory to provide complete out-of-the-box functionality.

**Integrated AntumbraDisplay** – Allows authorized users to adjust UV-C disinfecting dosage and monitor lamp life management. Includes multi-language support.

**Physical key switch protection** – Helps to ensure that only authorized users can modify settings or activate the system.

**External control inputs** – Robust, reliable connection to door switches, emergency shutoff buttons, and vacancy confirmation checkpoints.

**Motion sensor integration** – Designed to work with Dynalite's best-in-class network sensors to automatically shut down the UV lamps if motion is detected in the disinfection area.

**System status indicators** – Eight clearly labelled LEDs on the front of the enclosure show the device's status at a glance.

**Onboard event logging** – All system events are logged and timestamped for reporting.

**Ethernet connectivity** – Enables secure network access to configuration and event logs via System Manager head-end software.

**Dimensions:**  
500 x 400 x 200 mm (19.68 x 15.74 x 7.87 in)



### Ordering Codes:

Product	12NC
PDUVCC-10 (UV-C Controller + 10 Sensors)	913703073709
PDUVCC-20 (UV-C Controller + 20 Sensors)	913703073809
PDUVCC-30 (UV-C Controller + 30 Sensors)	913703074309
DACM Language and Label Kits	12NC
German (label kit)	913703248209
Chinese (label kit)	913703248309
Italian (label kit + DACM)	913703248409
French (label kit + DACM)	913703248509
Spanish (label kit + DACM)	913703248609
Polish (label kit + DACM)	913703248709
Dutch (label kit + DACM)	913703248809
Japanese (label kit + DACM)	913703248909



# Software and Apps

# Philips Dynalite System Manager

## System control, monitoring and management

Philips Dynalite System Manager is a multi-user control system management and monitoring software tool. It provides users with full visibility of the lighting and energy management system status and performance, while enabling simple local or global system adjustments.

**Complete control** – Initiate system changes, from a single lamp to the lighting state of an entire multi-story building, with a single mouse click.

**Simple scheduling** – Intuitive tools enable the user to schedule and manage events such as 'office space to day mode' or 'car parks to after-hours security mode' with ease.

**Easy integration** – Integration tools allow the user to manage more than just lighting. HVAC, motorized window shades and other systems are accessible through System Manager.

**Manage routine maintenance** – Full support of maintenance functions means that routine tasks can be undertaken without the involvement of a system specialist. Faults are automatically flagged for attention, ensuring that the facility continues to function and operational downtime is minimized.

**Strike the balance** – Alternate energy management schemes can be initiated automatically or manually, as required. This allows facility managers to balance energy efficiency with the needs of the occupants and can be initiated on either a tenancy or building-wide basis.

**Identify energy-saving initiatives based on current use** – The energy dashboard presents live data as simple visual displays. It mines raw data for analysis, to both establish a benchmark for future improvements and pinpoint exactly where energy is being used.

**Tailored control of individual light fittings** – The optional desktop app resides in the task bar of a user's computer and allows task lighting to be tailored to the user's individual preferences. Linking PC usage to the lighting control system ensures lights are not left on unnecessarily.



**Ordering Code:**  
12NC – SW913703089909

# Philips Dynalite System Builder

## Fast and efficient lighting control system set-up

Designed with the system installer and integrator in mind, System Builder is a comprehensive platform from Philips Dynalite. This user-friendly and intuitive application sets a new benchmark for efficient lighting control system set-up.

**New and improved set-up templates** – Provides a simple and intuitive interface for access to advanced system functionality, allowing flexibility to modify, customize or create specific tasks if required.

**Faster commissioning times** – Includes a series of common device settings based on typical lighting control scenarios. Tailor to your project, save and replicate across other sites as required.

**Virtual panel** – Control any area of the system directly, run sequences and test final operations.

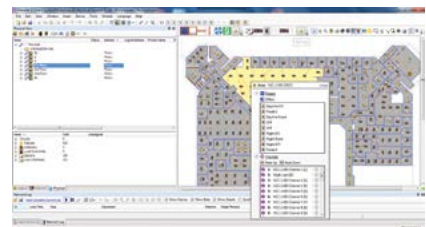
**Complex functionality made simple** – Manage logical grouping of lamps and other system hardware elements using simple graphical representations.

**Maintenance made easy** – Print out project floor plans with fixture details, including DALI addresses, to facilitate maintenance planning.

**Live data details** – The status of each lamp is visually represented using icons, which change color to reflect current lighting levels.

**Monitor the whole system** – Inbuilt network monitor details and logs all Philips Dynalite network traffic, as well as DALI network traffic.

**Ordering Code:**  
Philips Dynalite System Builder is available for authorized users on the technical support website [www.dynalite.org](http://www.dynalite.org)



# Philips Dynalite Control App

## Intuitive mobile interface

The new Philips Dynalite control app is available for iOS. It provides intelligent mobile control of the Philips Dynalite system in both residential and commercial applications. Wrapped in a modern and intuitive user interface, this app allows you to manage scenes, control individual channels and apply schedules.

**Plug-and-play** – Connect the mobile app to the Philips Dynalite system and it's ready to use.

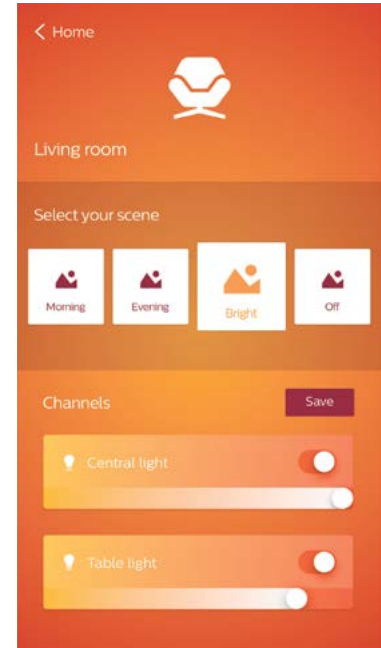
**Scene management** – Recall and edit pre-defined lighting scenes and control individual lighting channels.

**Scene scheduling** – Trigger lighting scenes based on a schedule.

**Simple connection** – Connect to the PDEG - Philips Dynalite Ethernet Gateway, through your local Wi-Fi network.

**Available for iOS** – Works on iPhone, iPad and iPod Touch

**Ordering Code:**  
Search the iOS App Store for 'Philips Dynalite'.



# Philips Dynalite EnvisionTouch

## Intuitive and effortless control

The Philips Dynalite Self-configuring Mobile App provides intelligent system control via an iOS or Android hand-held device. Suited to both residential and commercial control applications, multiple integrated systems can be easily controlled with single preset scenarios such as 'Welcome Home' or 'After Hours'.

**Self-configuring application** – Standardized templates and functionality reduce commissioning and installation time.

**Effortless control** – Users can view current system status and make adjustments to lighting, HVAC, blinds and other equipment connected to the Philips Dynalite control network.

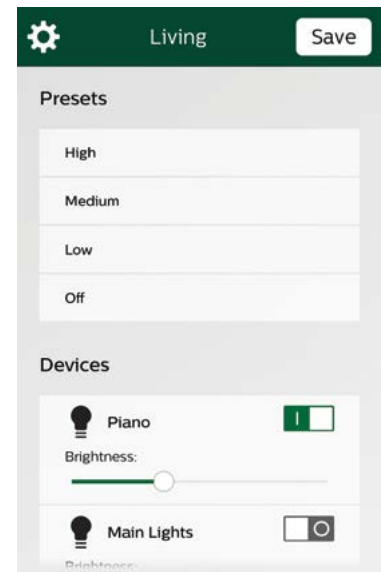
**Control individual lighting channels** – Adjust standard light sources via sliders, with an option to control tunable white fixtures and RGB color settings.

**Single-click control** – Recall predefined user preferences for lighting, blinds, heating and entertainment systems.

**Available for iOS and Android** – Works on iPhone, iPad, iPad Mini, iPod Touch and a range of Android phones and tablet devices.

**Simple Ethernet connection** – Requires a Philips Dynalite Ethernet Gateway and a WiFi router to connect to a Philips Dynalite System.

**Ordering Code:**  
Search the iOS App Store or Google Play Store for 'Philips Dynalite'.





# Philips Dynalite DynamicTouch

## Fully tailored to customer needs

The Philips Dynalite Customizable Mobile App provides intelligent system control, via an iOS hand-held device. Suited to both residential and commercial control applications, multiple integrated systems can be easily controlled with single preset scenarios. It is fully customizable, providing the user with the ability to fine-tune both the system and the appearance of the interface itself.

**Fully customizable** – The page layout and graphical design of this app can be customized by the installer to meet the exact requirements of the end-user. It is the ideal choice in applications such as boardrooms, where high levels of control are required for multiple systems through a single app.

**Effortless control** – Users can view current system status and make adjustments to lighting, HVAC, blinds and other equipment connected to the Philips Dynalite control network.

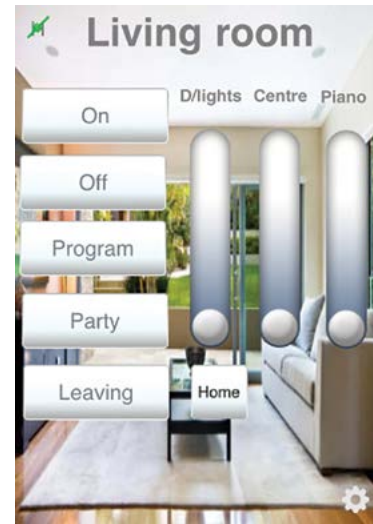
**Control individual lighting channels** – Adjust standard light sources via sliders, with an option to control tunable white fixtures and RGB color settings.

**Single-click control** – Recall predefined user preferences for lighting, blinds, heating and entertainment systems.

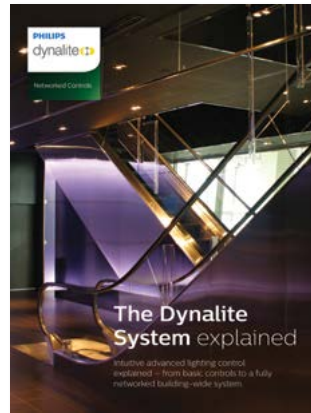
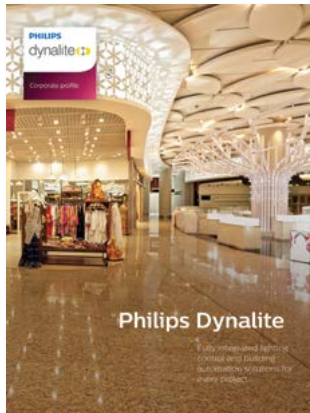
**Available for Apple iOS devices only** – Works on iPhone, iPad, iPad Mini and iPod Touch.

**Simple Ethernet connection** – Requires a PDEG and a WiFi router to connect to a Philips Dynalite system.

**Ordering Code:**  
Search the iOS App Store for 'Philips Dynalite'.



# Further Reading



Visit [www.philips.com/dynalite](http://www.philips.com/dynalite) to download your copy of our brochures or contact your local Signify representative.











[www.philips.com/dynalite](http://www.philips.com/dynalite)

© 2020 Signify Holding

All rights reserved. Specifications are subject to change without notice. No representation or warranty as to the accuracy or completeness of the information included herein is given and any liability for any action in reliance thereon is disclaimed. Philips and the Philips Shield Emblem are registered trademarks of Koninklijke Philips N.V. All other trademarks are owned by Signify Holding or their respective owners.

Cover Image: Optus Stadium, Perth

CAT0114-1020-AZZAUS-0